



# LIGHTING ARCHITECTURAL BROCHURE 2018

# UK MANUFACTURED

With a sterling reputation for over 15 years, our LED product range has stood the test of time and is a range that you can be sure to put your name to.



# INDEX

CC LED DOWNLIGHTS	4
CC LED INGROUNDS	14
CC LED LIGHT BATONS	28
CC LED WASH LIGHTS	36
CC LED DMX DRIVERS	46
CV LED FLEXIBLE STRIP	50
CV LED DMX DRIVERS	62
PIXEL LED	72
PIXEL DRIVERS	84
LED CONTROLLERS	86
ACCESSORIES	88

# LED DOWNLIGHTS

---

Professional architectural downlights, for when quality and reliability is a must. Beautifully designed with both performance and longevity in mind, this is a downlight range which brings both excitement and peace of mind.





**20W DOWNLIGHT**

**Lense Options:**  
15°/25°/40°

**RGBW/RGBA/TW**





**5W DOWNLIGHT**

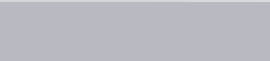
**Lense Options:**  
15°/25°/40°

**RGBW/RGBA/TW**





AVAILABLE COLOURS



ANODISED ALUMINIUM

# 5W RGBW/RGBA/TW CC LED DOWNLIGHT

Setting the bar for lighting excellence, with a high performance mix-at-source multi-chip LED housed in a precision engineered anodised aluminium housing, this will no doubt be the lighting professionals’ downlight of choice for years to come.

Compatible With : 350mA DMX Drive

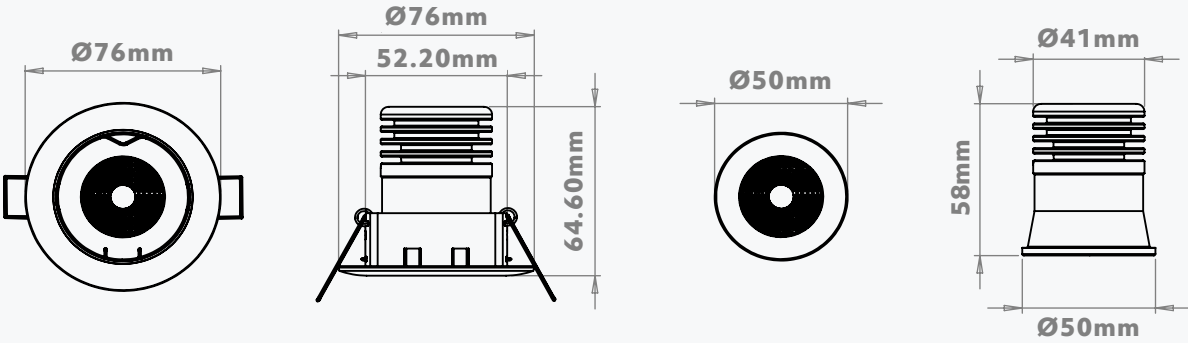
## TECHNICAL SPECIFICATIONS

- Channels **4Ch**
- Wattage **4.8W**
- Input Current **350mA**
- IP Rating **IP20**
- LED Type **RGBW /RGBA / TW**
- Housing Cut Out **65mmØ**
- Lens Options **15°/25°/40°**
- LED Connection **RJ45**
- Lumen Output **284lm [RGBW] / 227lm [RGBA] / 446lm [TW]**
- Operating Temp Range **-20 to 50 °C**

## OPTIONAL ACCESSORIES

- T-Piece Connector **RJ45**
- Gimbal **Static**

## DIMENSIONS

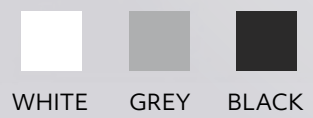


## OPTIONAL STATIC GIMBAL HOUSING





AVAILABLE COLOURS



# 20W RGBW/RGBA/TW CC LED DOWNLIGHT

Our most powerful downlight, with four high performance mix-at-source multi-chip LEDs, providing a harmogeneous and powerful wash of colour.

Compatible With : 350mA DMX Drive

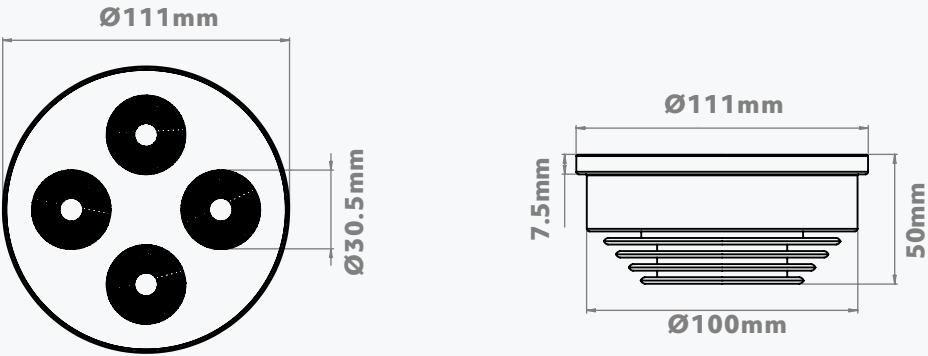
## TECHNICAL SPECIFICATIONS

- Channels **4Ch**
- Wattage **4.8W**
- Input Current **350mA**
- IP Rating **IP20**
- LED Type **RGBW /RGBA / TW**
- Housing Cut Out **65mmØ**
- Lens Options **15°/25°/40°**
- LED Connection **RJ45**
- Lumen Output **284lm [RGBW] / 227lm [RGBA] / 446lm [TW]**
- Operating Temp Range **-20 to 50 °C**

## OPTIONAL ACCESSORIES

- T-Piece Connector **RJ45**
- Gimbal **Tiltable**

## DIMENSIONS



## OPTIONAL TILTABLE GIMBAL HOUSING

GLOSS WHITE





# LED INGROUNDS

---

Ingress-protected inground fixtures, ranging from recessed marker lights to impressive up lights, the inground range has the tool to take on those projects where a recessed solution is required.





## 1.2W INGROUND

Outdoor Decking  
Installation.

IP67





**5W INGROUND**

Outdoor Decking  
Installation.

**IP67**





**20W INGROUND**

Outdoor Decking  
Installation.

**IP67**







AVAILABLE COLOURS



S/STEEL

# 1.2W SINGLE COLOUR CC LED INGROUND

It might be small, but it is powerful. One high performance LED thermally managed and housed in a precision engineered IP67 rated anodised aluminium housing.

With 316 stainless steel bezel, this fitting is perfect for step illumination inside or out.

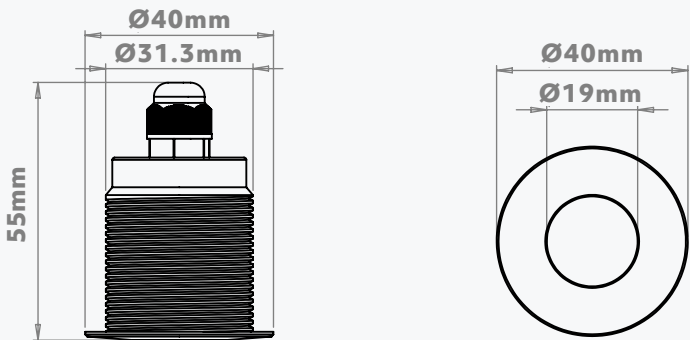
## TECHNICAL SPECIFICATIONS

- Channels **1Ch**
- Wattage **1.2W**
- IP Rating **IP67**
- LED Type **Single Colour**
- Housing Cut Out **32mmØ**
- LED Connection **2 Core**
- Housing **Anodised Aluminium**
- Bezel **316 Stainless Steel**
- Operating Temp Range **-20 to 50 °C**

## OPTIONAL DIFFUSER

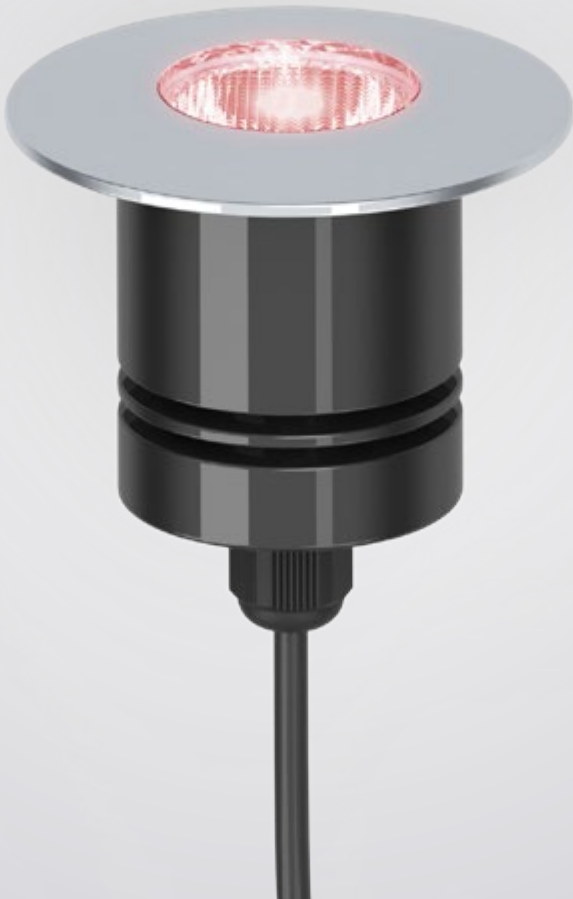
- Polycarbonate **Clear [8°/25°]**
- Polycarbonate **Frosted**

## DIMENSIONS



## SINGLE COLOUR OPTIONS

- |     |       |      |       |         |       |         |
|-----|-------|------|-------|---------|-------|---------|
| RED | GREEN | BLUE | AMBER | C/WHITE | WHITE | W/WHITE |
|     |       |      |       |         |       |         |



AVAILABLE COLOURS



S/STEEL

# 5W RGBW/RGBA/TW CC LED INGROUND

Encasing the same technology as our popular 5W downlights into an IP67 rated anodised aluminium housing with 316 stainless steel bezel.

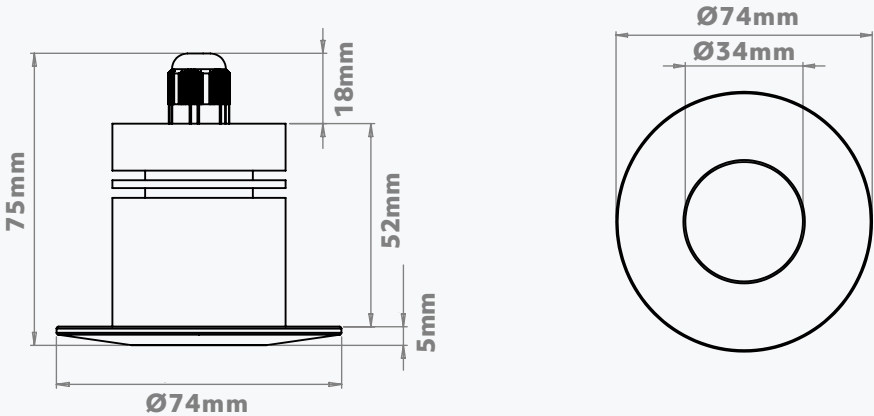
Perfect for external deck lighting or internal applications alike.

Compatible With : 350mA DMX Drive

## TECHNICAL SPECIFICATIONS

- Channels **4Ch**
- Wattage **4.8W**
- Input Current **350mA**
- IP Rating **IP67**
- LED Type **RGBW / RGBA / TW**
- Housing Cut Out **46mmØ**
- Lens Options **15°/25°/40°**
- LED Connection **RJ45**
- Lumen Output **280lm [RGBW]**
- Operating Temp Range **-20 to 50 °C**

## DIMENSIONS

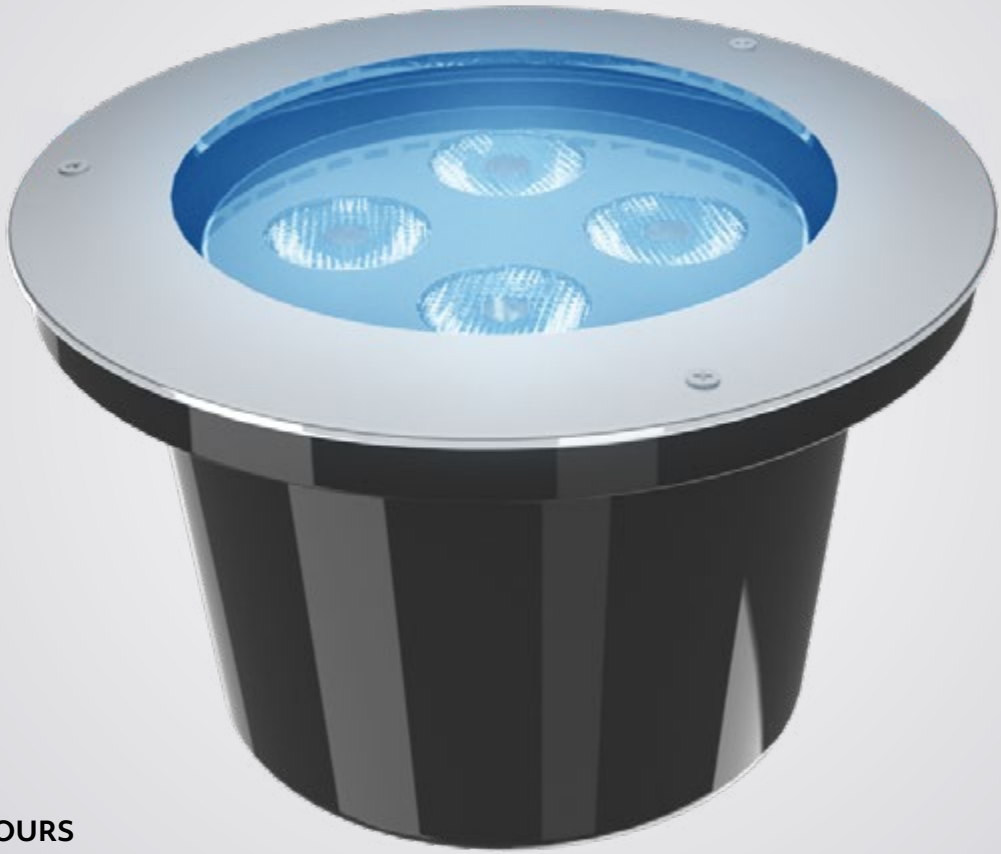


## OPTIONAL LENSES



- Our lense options are:
- 15° : Narrow Beam Angle**
  - 25° : Medium Beam Angle**
  - 40° : Wide Beam Angle**





AVAILABLE COLOURS



S/STEEL

# 20W RGBW/RGBA/TW CC LED INGROUND

This Inground encases the same technology of our powerful 20W downlights into an IP67 recessed inground housing with a stainless steel bezel.

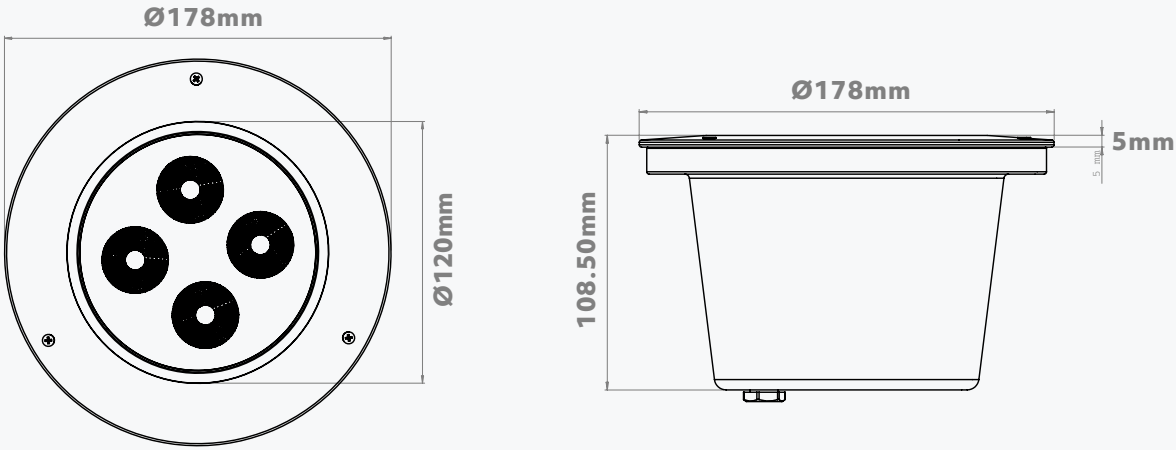
Perfect for external applications where a powerful wash is required.

Compatible With : 350mA DMX Drive

## TECHNICAL SPECIFICATIONS

- Channels **4Ch**
- Wattage **19.2W**
- Input Current **350mA**
- IP Rating **IP67**
- LED Type **RGBW / RGBA / TW**
- Housing Cut Out **153 x 183mmØ**
- Lens Options **15°/25°/40°**
- LED Connection **RJ45**
- Lumen Output **1120lm [RGBW]**
- Operating Temp Range **-20 to 50 °C**

## DIMENSIONS



## OPTIONAL LENSES

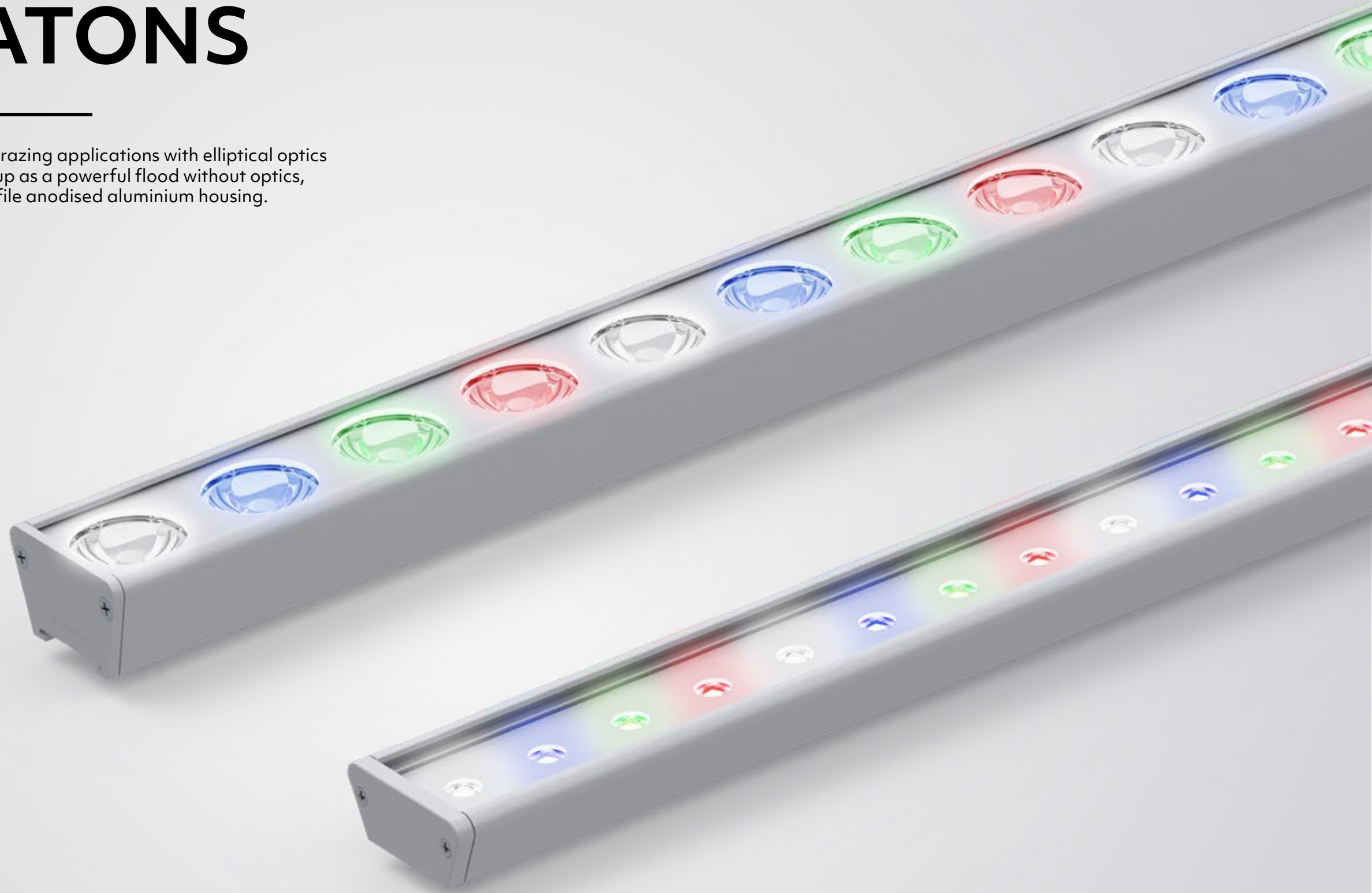


- Our lense options are:
- 15° : Narrow Beam Angle**
  - 25° : Medium Beam Angle**
  - 40° : Wide Beam Angle**

# LED BATONS

---

High power linear light perfect for wall grazing applications with elliptical optics and high power LEDs, which doubles up as a powerful flood without optics, beautifully designed in a low profile anodised aluminium housing.





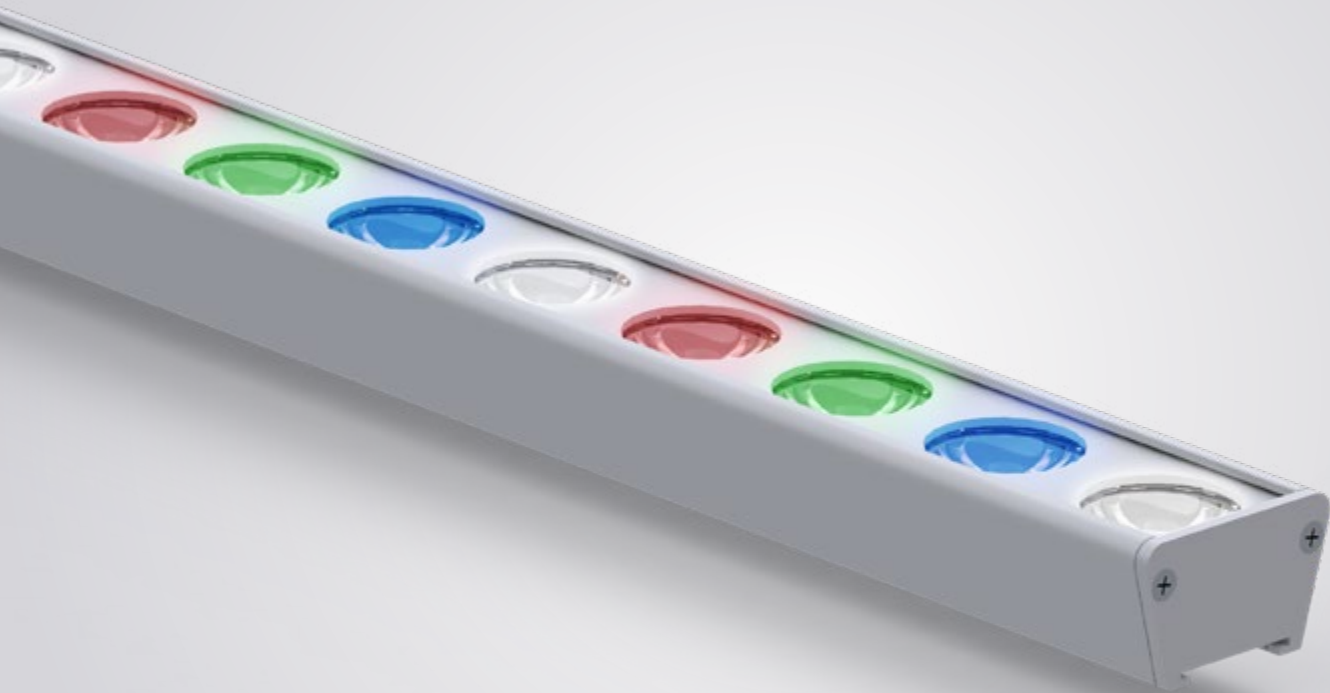
A large indoor arena, likely a casino or event space, featuring a large city skyline backdrop. The ceiling is equipped with numerous long, thin, multi-colored light fixtures (RGBW) that are illuminated, creating a vibrant, multi-colored glow. In the foreground, a pool table is visible, partially illuminated by the ambient light. The overall atmosphere is dynamic and modern.

**60W OPTIC 1200**

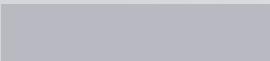
Colour Bowl

**RGBW**





AVAILABLE COLOURS



ANODISED ALUMINIUM

# OPTIC RGBW/RGBA/TW

## CC LED BATON

Perfect for wall grazing and other applications where high power linear light is required, the optic baton provides a high power multi-source linear wash.

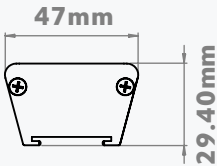
Housed in a robust anodised aluminium extrusion and available with an IP65 polycarbonate housing.

Compatible With : 350mA DMX Drive

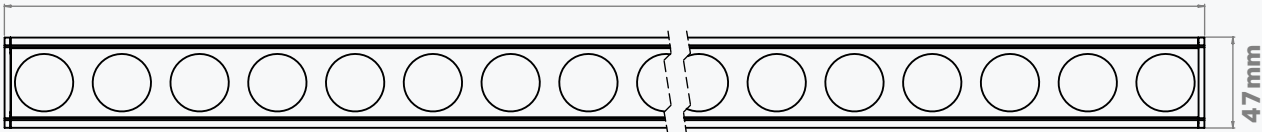
### TECHNICAL SPECIFICATIONS

- Channels **4Ch**
- Wattage **19.2W (400), 38.4W (800), 57.6W (1200)**
- IP Rating **IP40 (IP65 also available)**
- Input Current **350mA**
- LED Type **RGBW / RGBA / TW**
- LED Connection **RJ45**
- Lens Options **8°/25°/25° x 8°**
- Housing Options **Anodised Aluminium**
- LED Quantity **16 (400), 32 (800), 48 (1200)**
- Operating Temp Range **-20 to 50 °C**

### DIMENSIONS



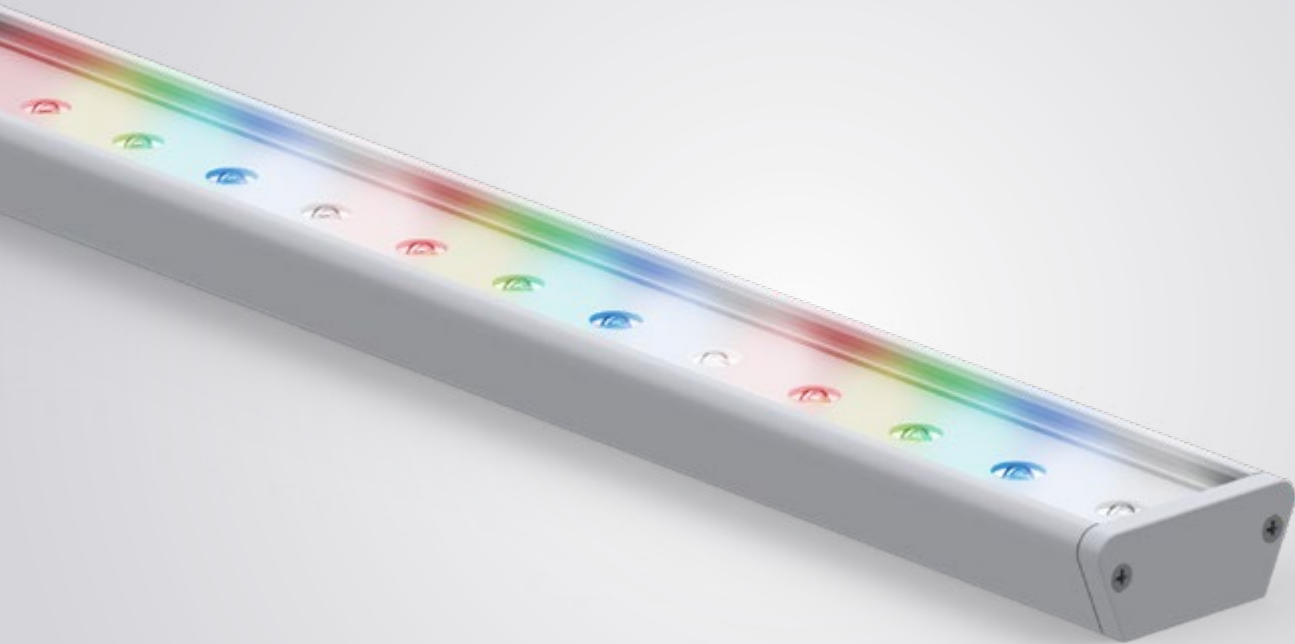
Available Lengths (400mm, 800mm, 1200mm)



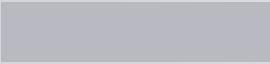
### OPTIONAL LENSES



- Our lense options are:
- 8° : Narrow Beam Angle**
  - 25° : Medium Beam Angle**
  - 25° x 8° : Eliptical Beam Angle**



AVAILABLE COLOURS



ANODISED ALUMINIUM

# NON OPTIC RGBW/RGBA/TW CC LED BATON

The non optic Nova Baton provides a high power multi-source linear wash, housed in a robust anodised aluminium extrusion.

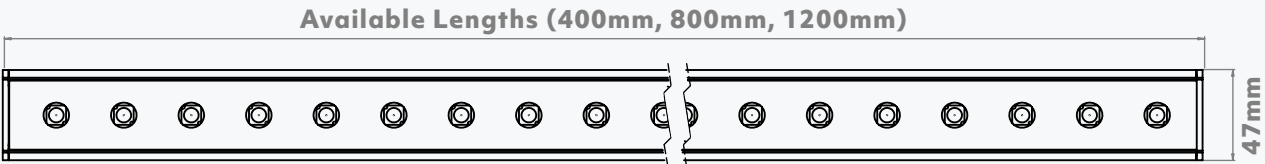
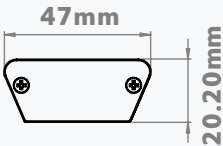
This product is perfect for applications where high power linear flood is required.

Compatible With : 350mA DMX Drive

## TECHNICAL SPECIFICATIONS

- Channels **4Ch**
- Wattage **19.2W (400), 38.4W (800), 57.6W (1200)**
- Input Current **350mA**
- IP Rating **IP40 (IP65 also available)**
- LED Type **RGBW / RGBA / TW**
- LED Connection **RJ45**
- Housing Options **Anodised Aluminium**
- LED Quantity **16 (400), 32 (800), 48 (1200)**
- Operating Temp Range **-20 to 50 °C**

## DIMENSIONS





# LED WASH LIGHTS

---

Illuminate the Skyline with our range of external grade wash lights, giving lighting professionals the tools to add colour to a wide range of applications.



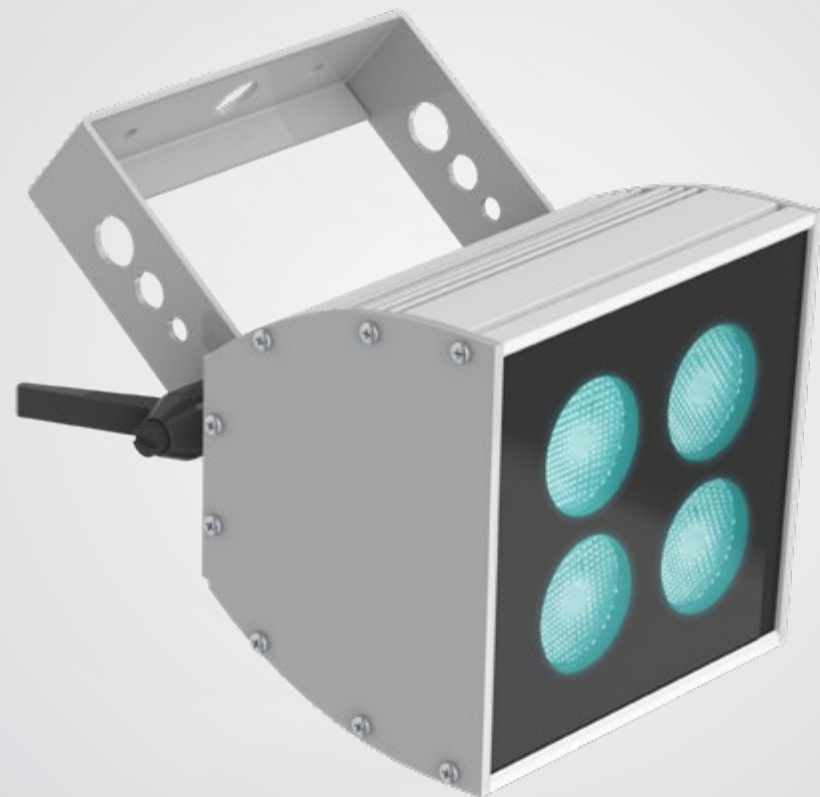




20W/40W Wash  
Nation Of Shopkeepers  
Leeds  
IP65







AVAILABLE COLOURS



# 20W RGBW/RGBA/TW CC LED WASH LIGHT

Packing a powerful colour mix at source with the latest in multi-chip LED technology neatly packed into and thermally managed by an IP65 rated aluminium housing.

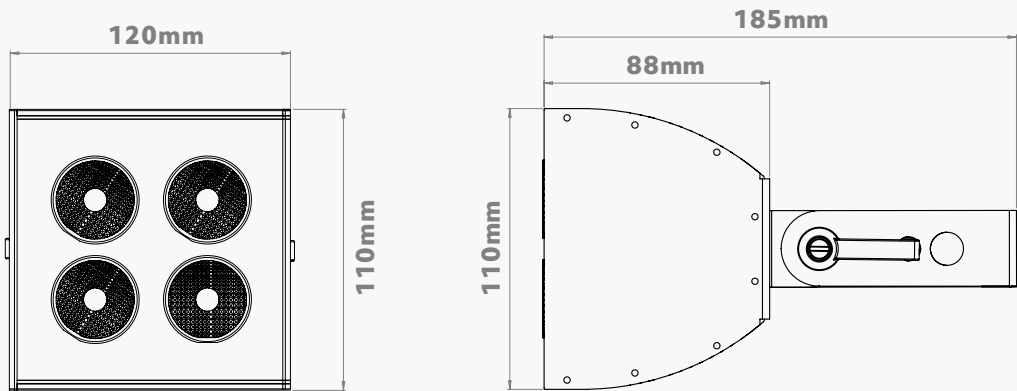
Making this fitting suitable for a wide variety of applications.

Compatible With : 350mA DMX Drive

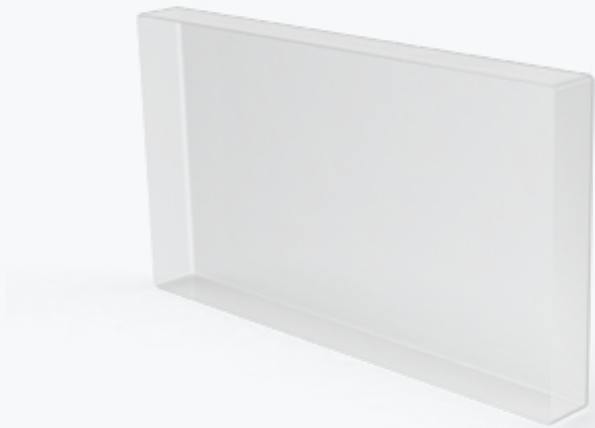
## TECHNICAL SPECIFICATIONS

- Channels **4Ch**
- Wattage **19.2W**
- Input Current **350mA**
- IP Rating **IP65**
- LED Type **RGBW / RGBA / TW**
- Housing Options **Grey / White / Black**
- Lens Options **15°/25°/40°**
- LED Connection **RJ45**
- Lumen Output **1120lm [RGBW]**
- Operating Temp Range **-20 to 50 °C**

## DIMENSIONS

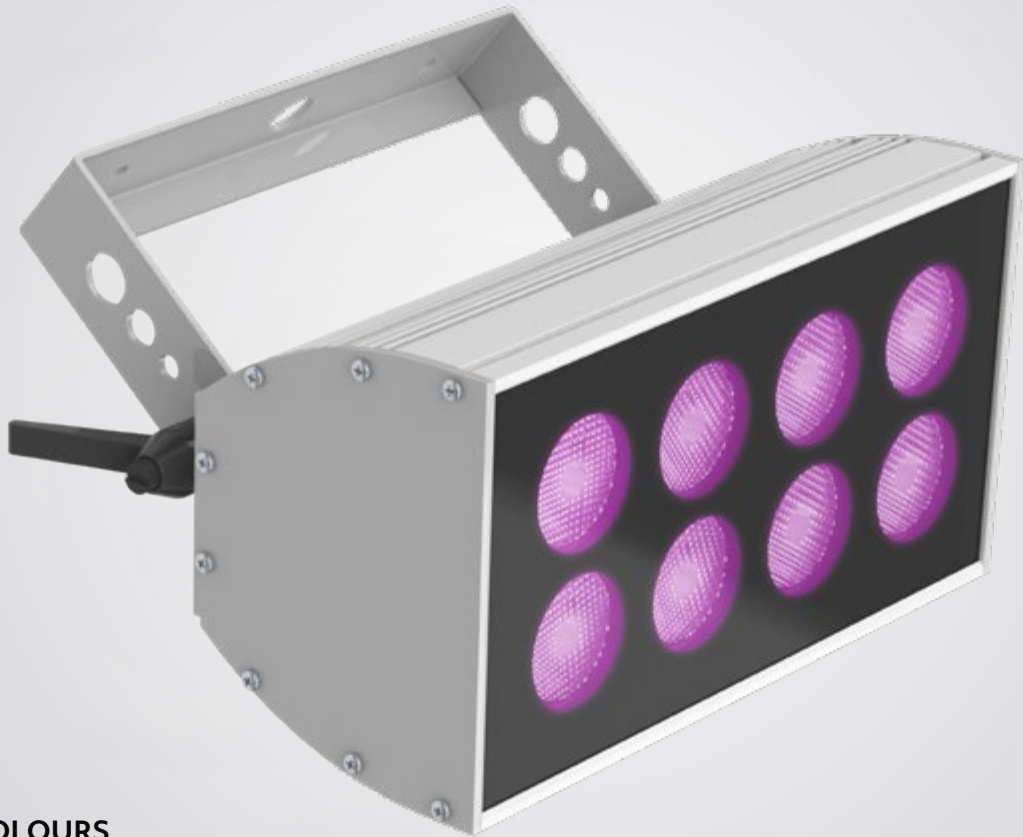


## OPTIONAL PROTECTION COVER



### HARSH ENVIRONMENT COVER

For harsh environments this cover is fitted around the front of the SKYLINE unit to give it maximum protection.



AVAILABLE COLOURS



# 40W RGBW/RGBA/TW CC LED WASH LIGHT

Packing a powerful colour mix at source with the latest in multi-chip LED technology.

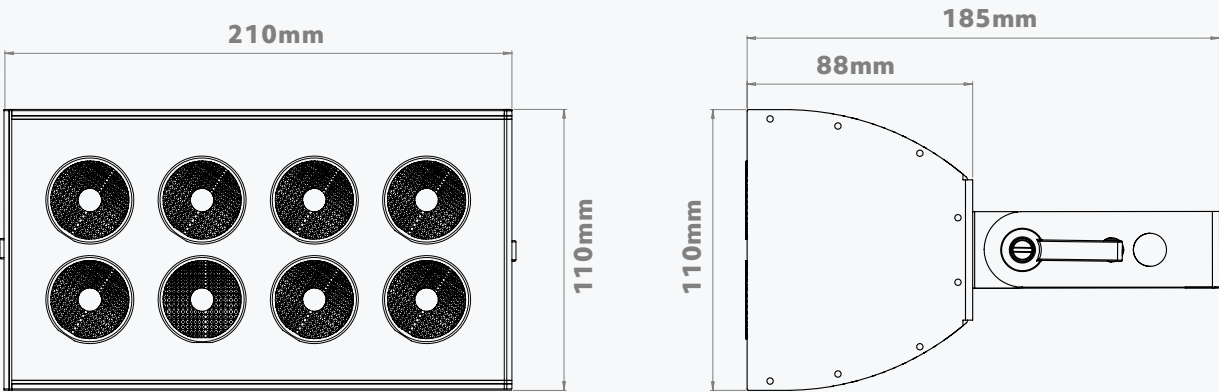
It is neatly packed into and thermally managed by an IP65 rated aluminium housing, making this fitting suitable for a wide variety of applications.

**Compatible With : 350mA DMX Drive**

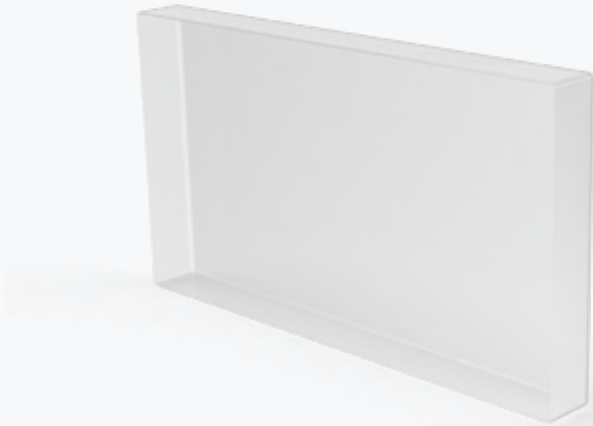
## TECHNICAL SPECIFICATIONS

- Channels **4Ch**
- Wattage **38.4W**
- Input Current **350mA**
- IP Rating **IP65**
- LED Type **RGBW / RGBA / TW**
- Housing Options **Grey / White / Black**
- Lens Options **15°/25°/40°**
- LED Connection **RJ45**
- Lumen Output **2240lm [RGBW]**
- Operating Temp Range **-20 to 50 °C**

## DIMENSIONS



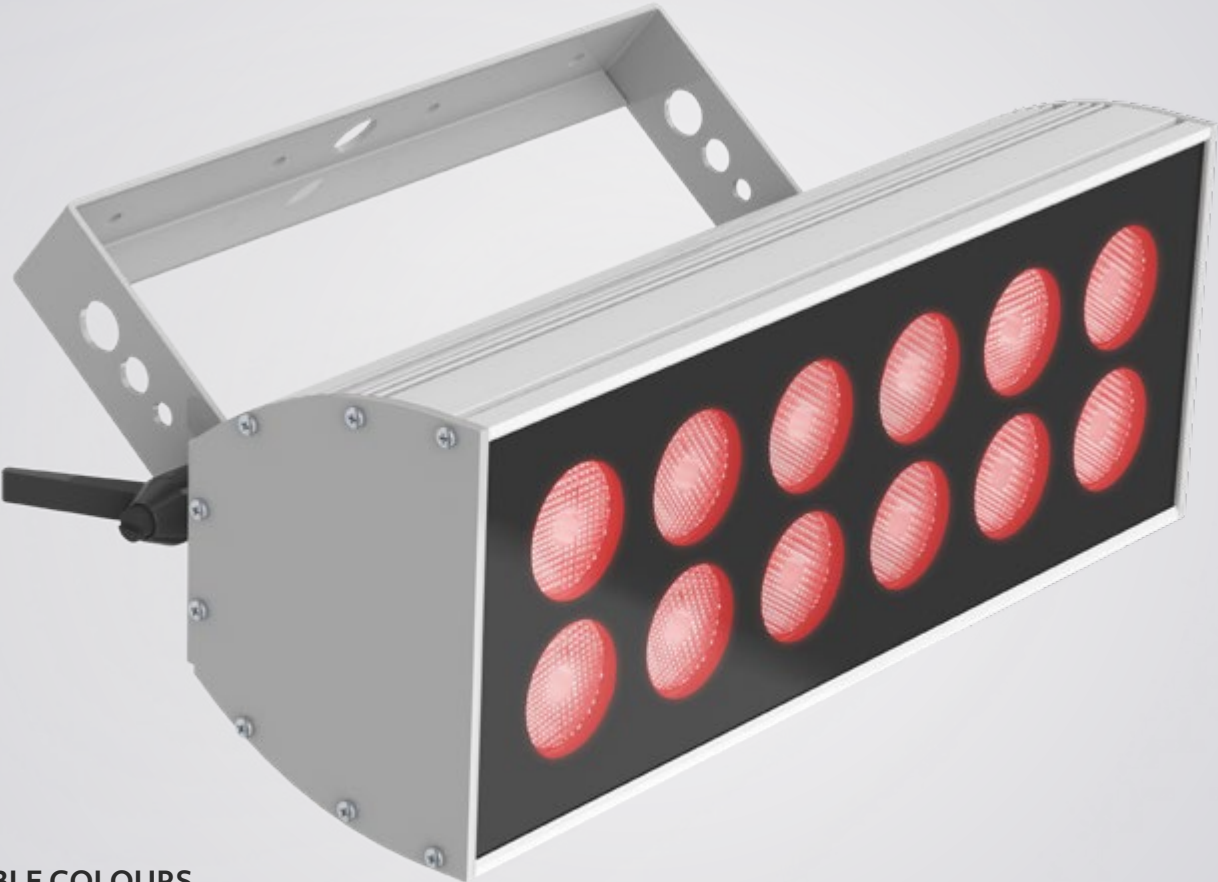
## OPTIONAL PROTECTION COVER



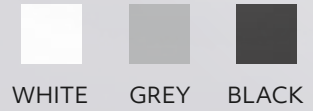
**HARSH ENVIRONMENT COVER**

For harsh environments this cover is fitted around the front of the SKYLINE unit to give it maximum protection.





AVAILABLE COLOURS



# 60W RGBW/RGBA/TW CC LED WASH LIGHT

Packing a powerful colour mix at source with the latest in multi-chip LED technology.

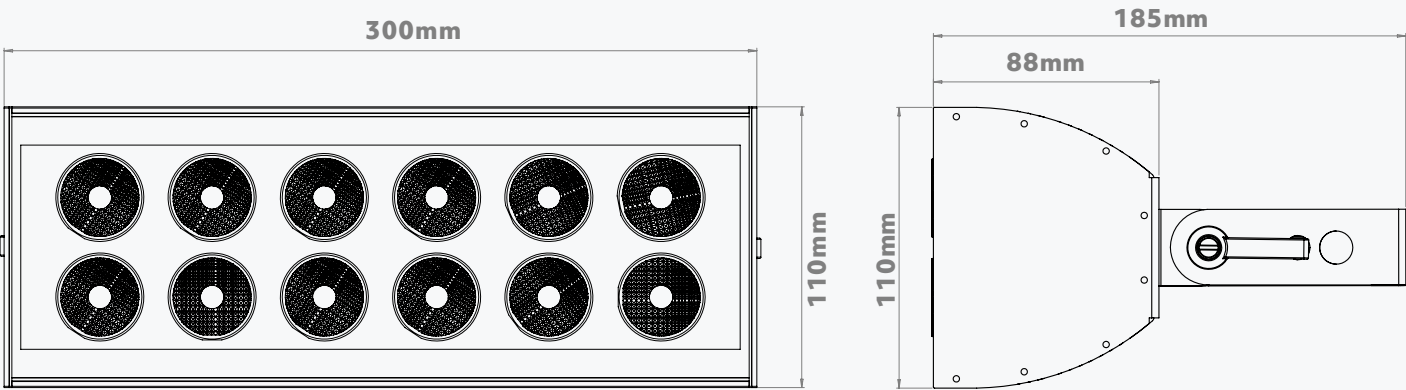
It is neatly packed into and thermally managed by an IP65 rated aluminium housing, making this fitting suitable for a wide variety of applications.

**Compatible With : 350mA DMX Drive**

## TECHNICAL SPECIFICATIONS

- Channels **4Ch**
- Wattage **57.6W**
- Input Current **350mA**
- IP Rating **IP65**
- LED Type **RGBW / RGBA / TW**
- Housing Options **Grey / White / Black**
- Lens Options **15°/25°/40°**
- LED Connection **RJ45**
- Lumen Output **3360lm [RGBW]**
- Operating Temp Range **-20 to 50 °C**

## DIMENSIONS

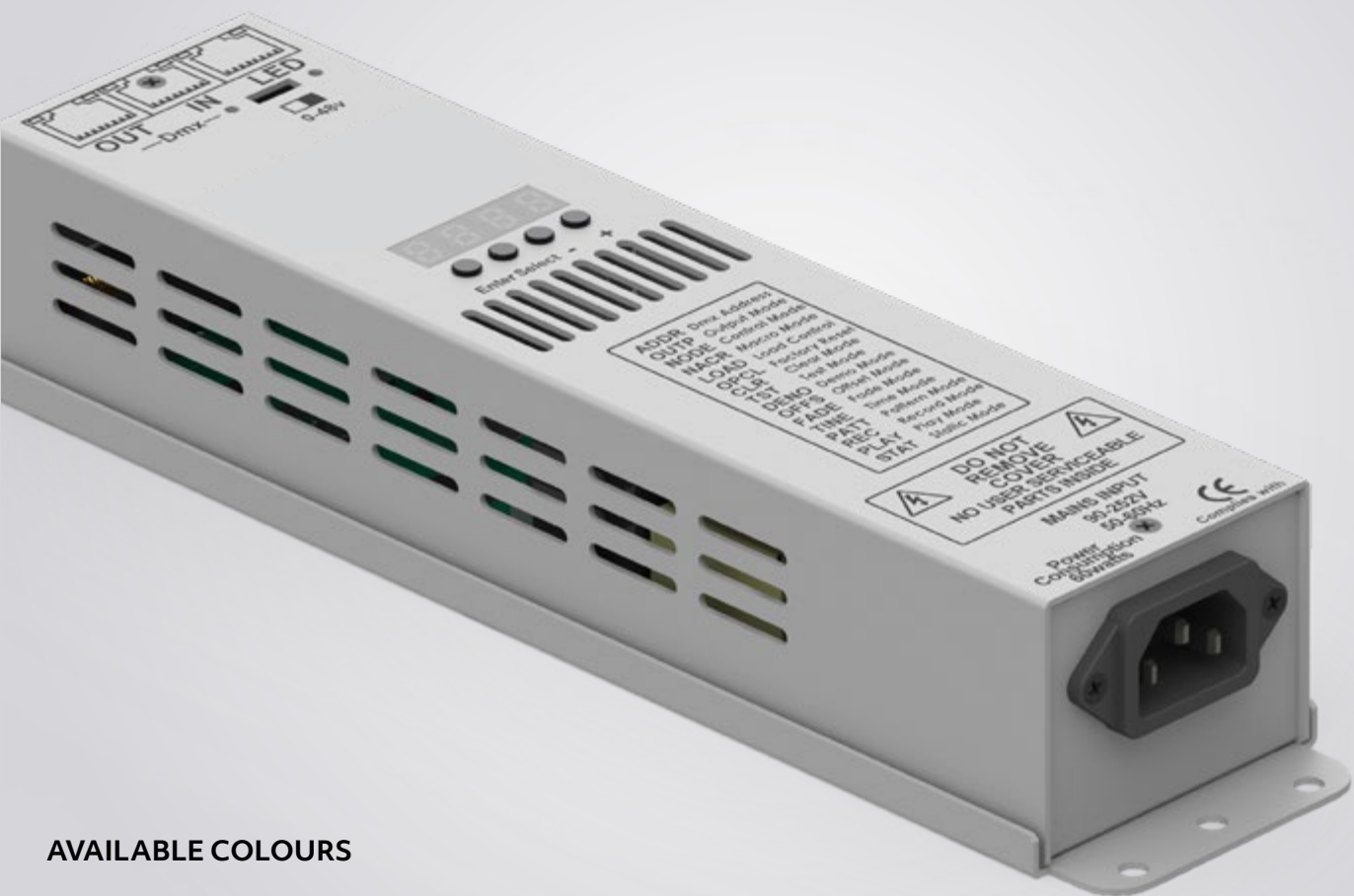


## OPTIONAL PROTECTION COVER



### HARSH ENVIRONMENT COVER

For harsh environments this cover is fitted around the front of the SKYLINE unit to give it maximum protection.



AVAILABLE COLOURS



# 60W 350MA DMX DRIVE

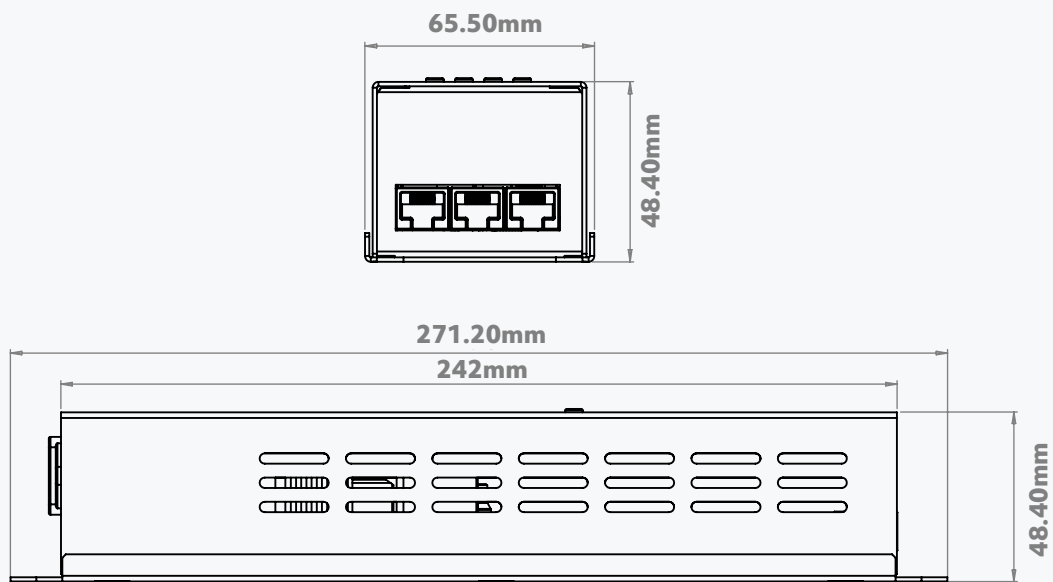
## CC LED DMX DRIVER

Driver technology doesn't come any more tested than this, with over 15 years in the field to back it up, this DMX driver will keep your 350mA LED lighting running... and running... and running.

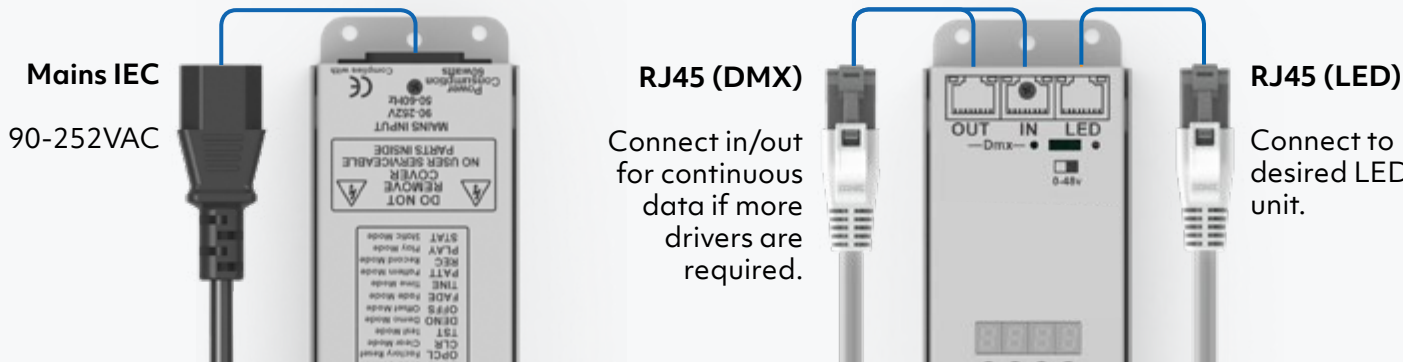
### TECHNICAL SPECIFICATIONS

- Output Current **350mA**
- LED Outputs **1**
- Max Voltage **48V**
- Power Consumption **60W**
- Channels **1-4Ch (RGB[W])**
- Power Input Mains **100-240VAC**
- Data & LED Connections **RJ45**
- Operating Temp Range **-20°to 50 °C**

### DIMENSIONS



### CONNECTIONS







AVAILABLE COLOURS



# 240W 350MA DMX DRIVE

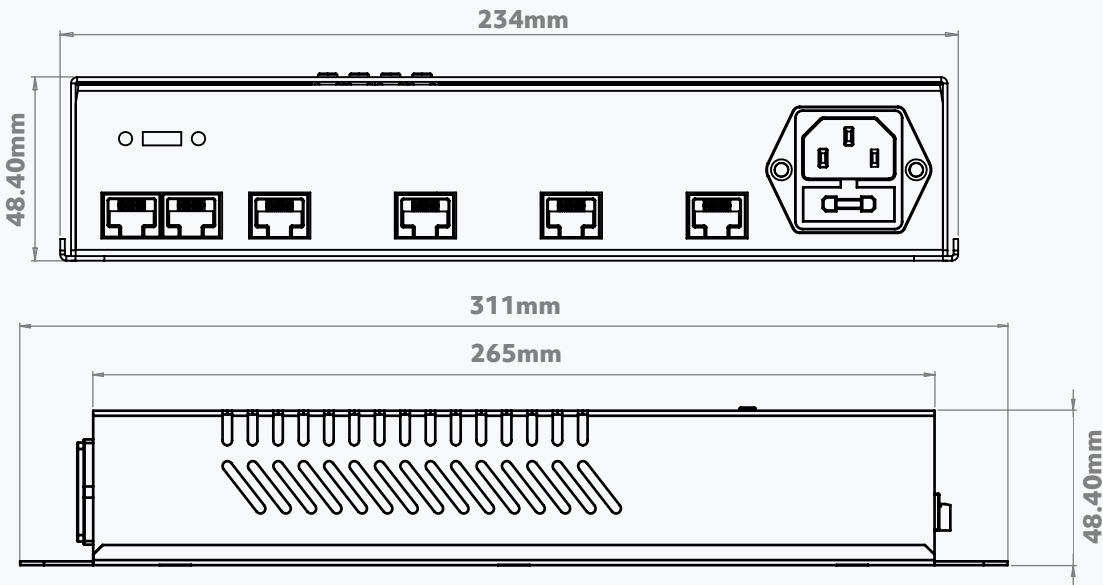
## CC LED DMX DRIVER

Utilising the proven technology of the 60W 350mA DMX Drive, with over 15 years in the field to back it up, this driver will safely power & control more of your 350mA LED from one driver unit.

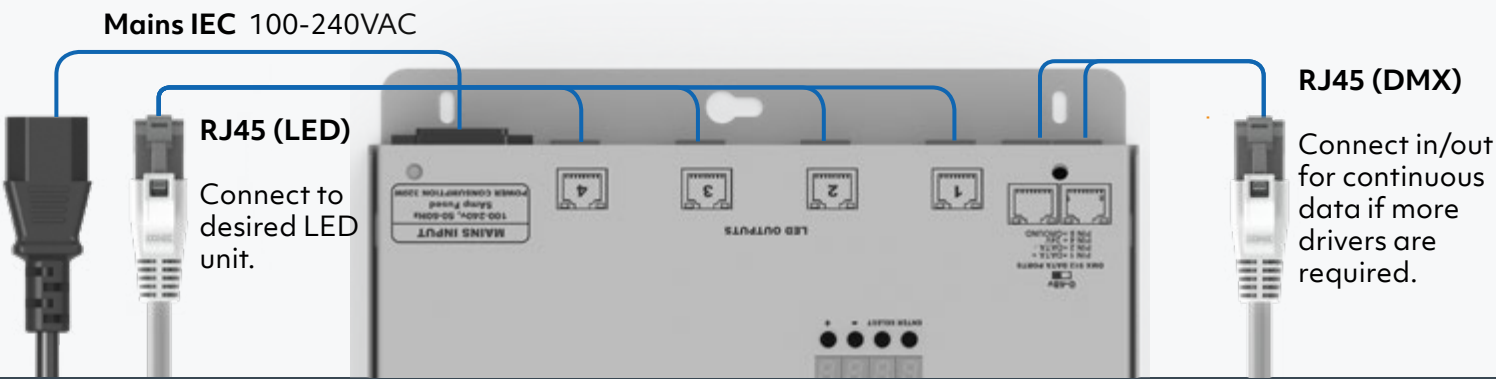
### TECHNICAL SPECIFICATIONS

- Output Current **350mA/750mA**
- LED Outputs **4**
- Max Voltage **48V**
- Power Consumption **240W**
- Channels **1-16Ch (RGB[W])**
- Power Input Mains **100-240VAC**
- Data & LED Connections **RJ45**
- Operating Temp Range **-20° to 50 °C**

### DIMENSIONS



### CONNECTIONS





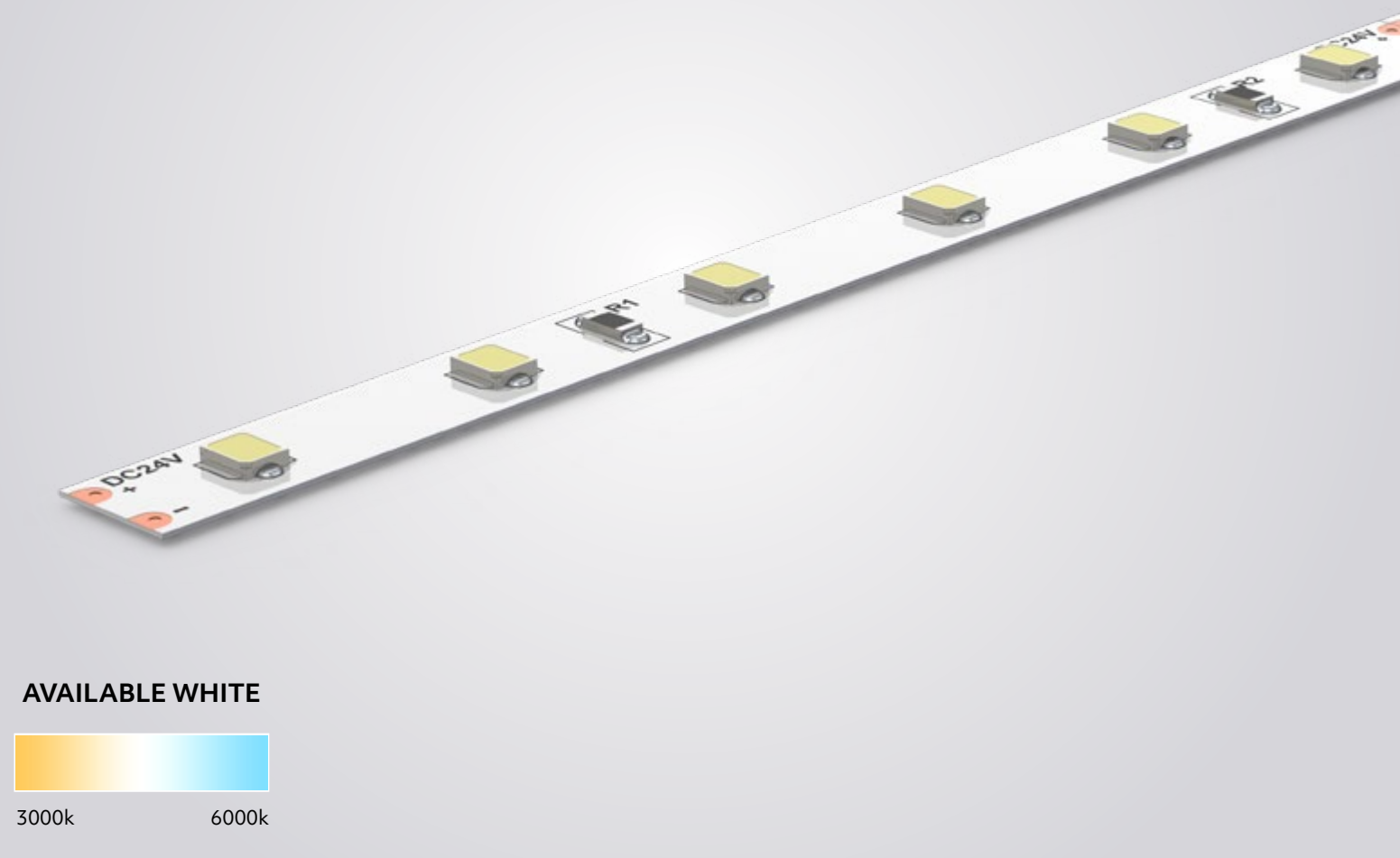


Bonbonniere

London

**FLEXIBLE LED  
STRIP**





# FLEXIBLE ULTRA POWER WHITE 12W CV LED FLEXIBLE STRIP

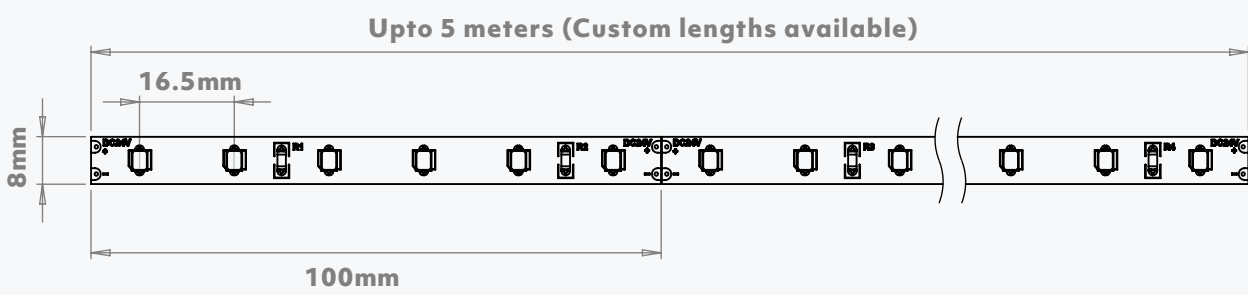
Designed for ease of install, our led tape is highly flexible and will fit in the most tightest and toughest of applications.

This flexible high power white LED Tape has 60 LED's per meter giving this LED Tape ultra high power light output.

## TECHNICAL SPECIFICATIONS

- Voltage **24V**
- LED's Per Meter **60**
- LED Type **SMD2835**
- Power Consumption **12W/M**
- Channels **1Ch [WW] [NW] [CW]**
- IP Rating **IP20 (IP67 also available)**
- Cutting Points **100mm**
- Operating Temp Range **-20°to 50 °C**

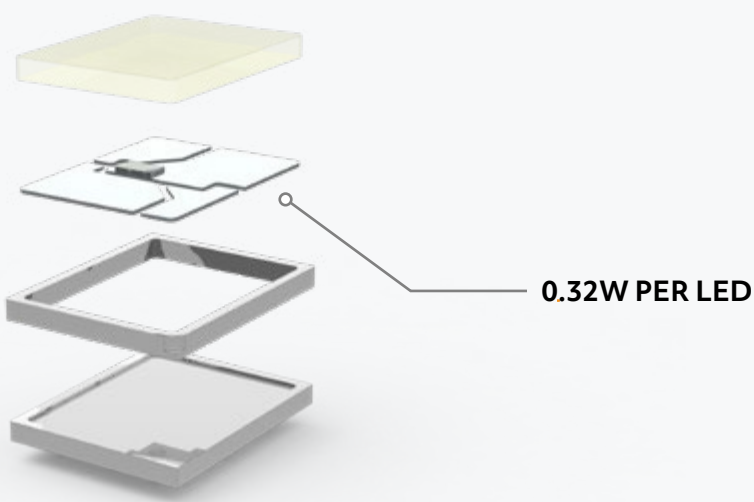
## DIMENSIONS

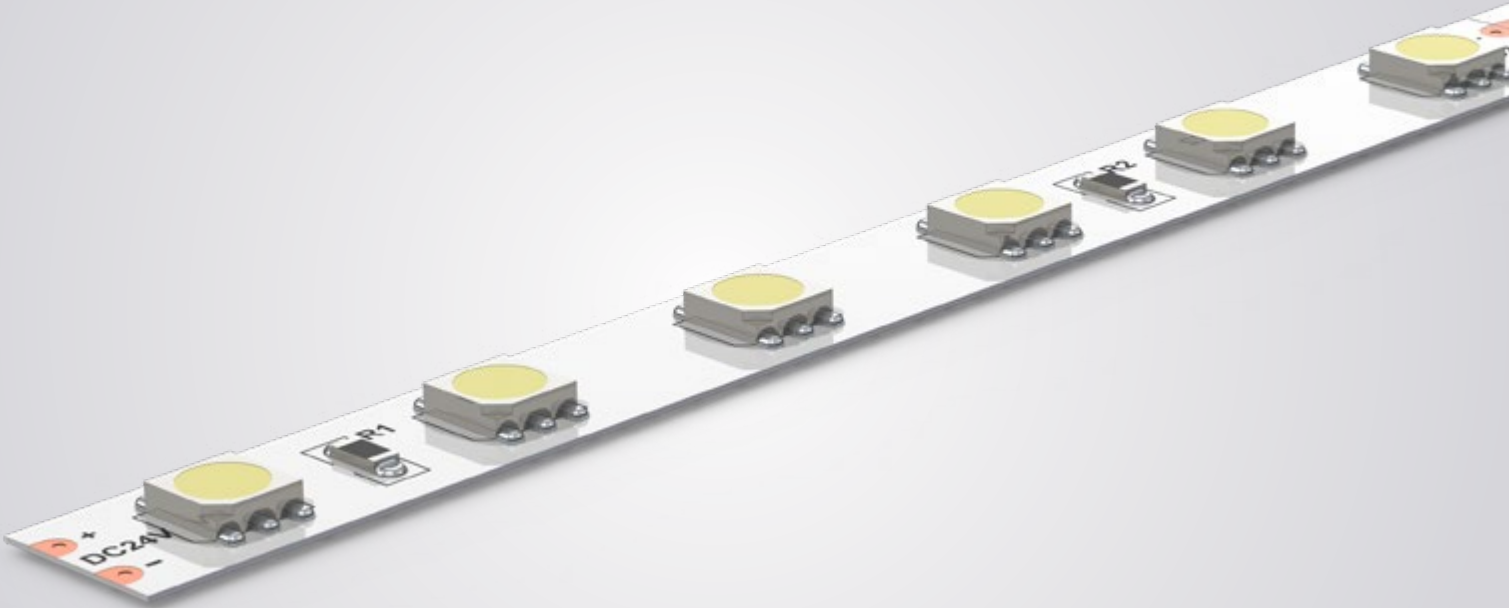


## LED TECHNOLOGY

### SMD2835 LED

The SMD2835 is the most efficient White SMD technology, with a higher lumen output per watt and unrivalled epistar quality,





**AVAILABLE COLOURS**

RED

GREEN

BLUE

AMBER

2700k — TO — 6500K

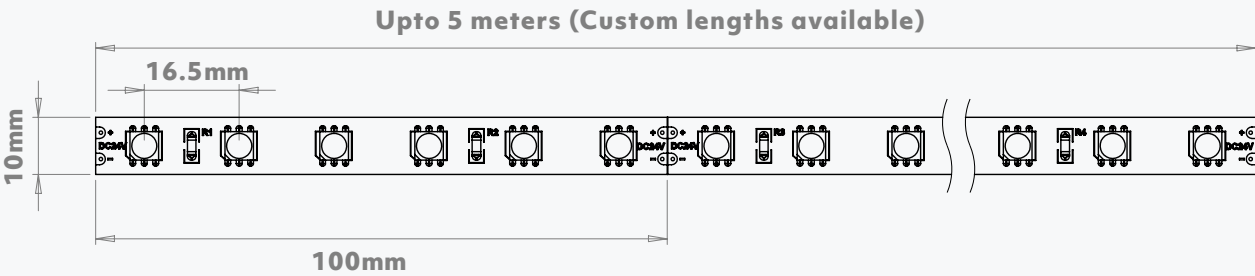
# FLEXIBLE HIGH POWER SINGLE 14.4W CV LED FLEXIBLE STRIP

Cuttable, stickable, reliable, our high power single colour strip is will provide bright and uniformed static coloured light.

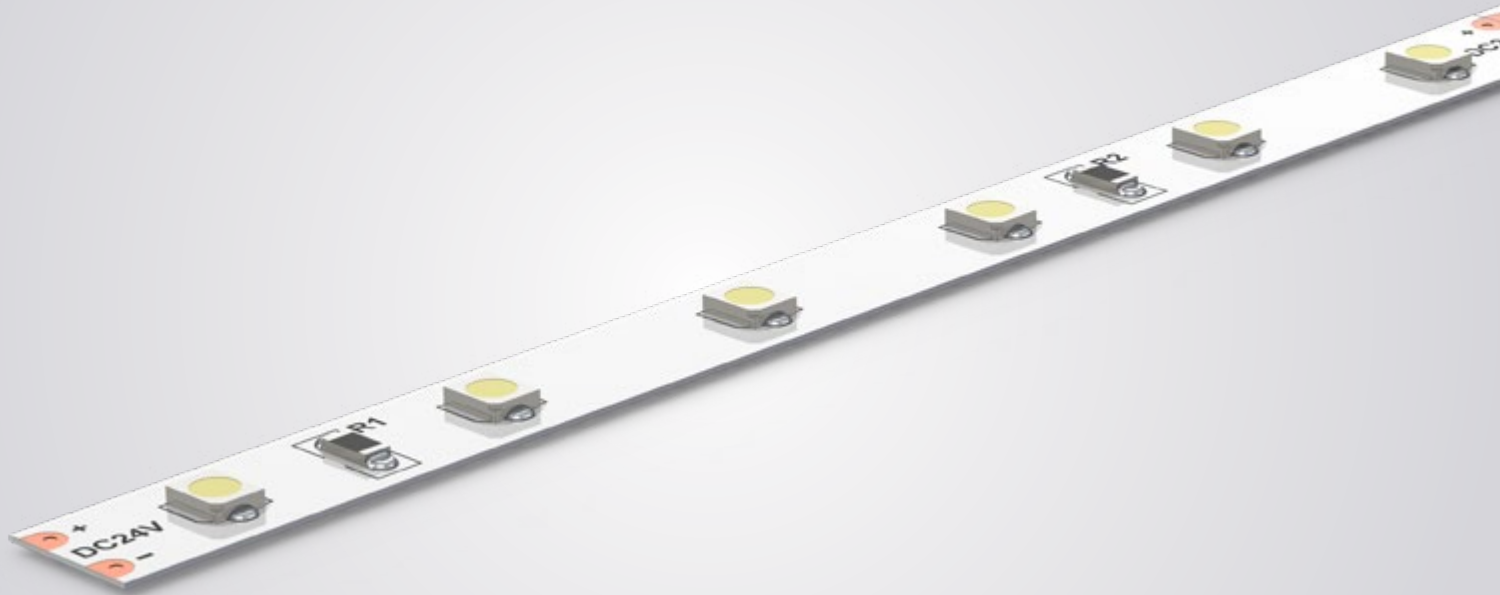
## TECHNICAL SPECIFICATIONS

- Voltage **24V**
- LED's Per Meter **60**
- LED Type **SMD5050**
- Power Consumption **14.4W/M**
- Channels **1Ch [R] [G] [B] [A] [2700K-6500K]**
- IP Rating **IP20 (IP67 also available)**
- Cutting Points **100mm**
- Operating Temp Range **-20°to 50 °C**

## DIMENSIONS







AVAILABLE COLOURS

RED

GREEN

BLUE

AMBER

2700k — TO — 6500K

FLEXIBLE STANDARD POWER 4.8W

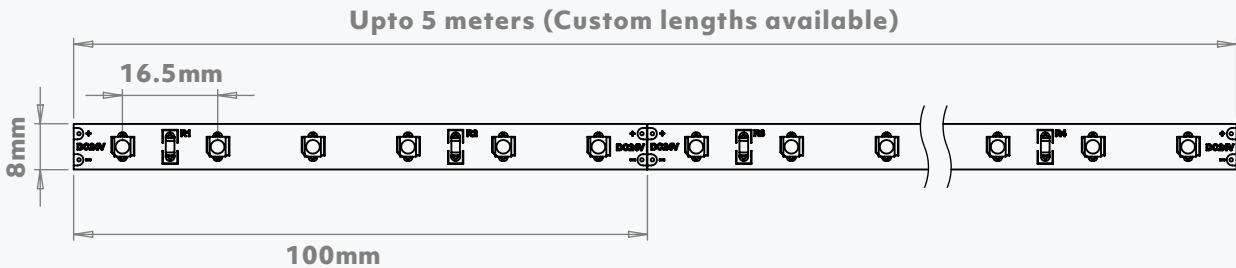
CV LED FLEXIBLE STRIP

Cuttable, stickable, reliable, our standard power single colour strip is perfect to achieve a subtle glow to define an area or feature.

TECHNICAL SPECIFICATIONS

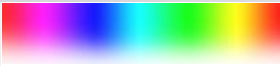
- Voltage **24V**
- LED's Per Meter **60**
- LED Type **SMD3528**
- Power Consumption **4.8W/M**
- Channels **1Ch [R] [G] [B] [A] [2700K-6500K]**
- IP Rating **IP20 (IP67 also available)**
- Cutting Points **100mm**
- Operating Temp Range **-20°to 50 °C**

DIMENSIONS





AVAILABLE COLOUR MIX



# FLEXIBLE RGBW LED TAPE 19.2W/M

## CV LED FLEXIBLE STRIP

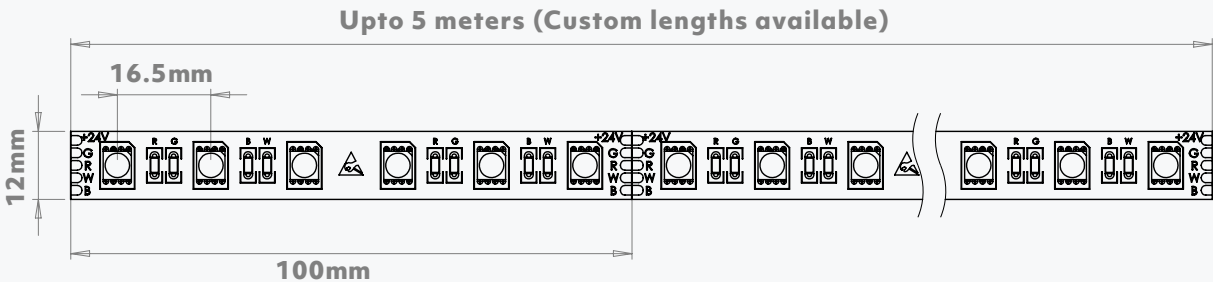
Designed for ease of install, our led tape is highly flexible and will fit in the most tightest and toughest of applications.

This flexible RGBW LED Tape has 60 LED's per meter giving this LED Tape high brightness colour changing. With capability of utilizing the pastel hues and shades made with RGBW.

### TECHNICAL SPECIFICATIONS

- Voltage **24V**
- LED's Per Meter **60**
- LED Type **SMD5050**
- Power Consumption **19.2W/M**
- Channels **4Ch (RGB[W])**
- IP Rating **IP20 (IP67 also available)**
- Cutting Points **100mm**
- Operating Temp Range **-20° to 50°C**

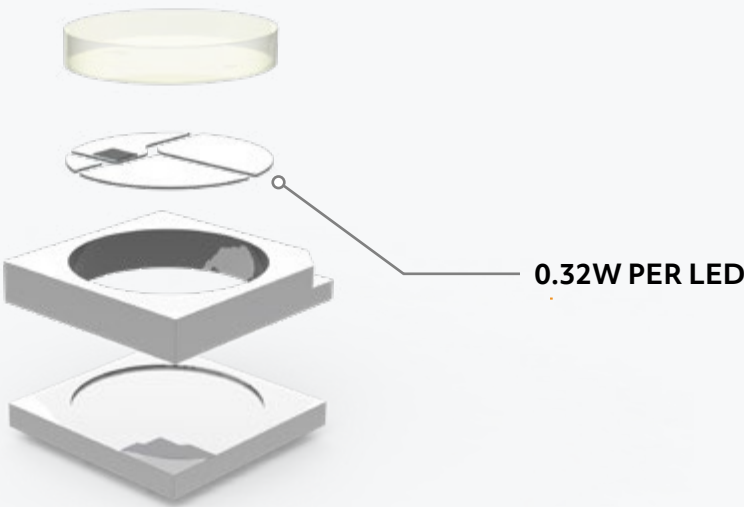
### DIMENSIONS



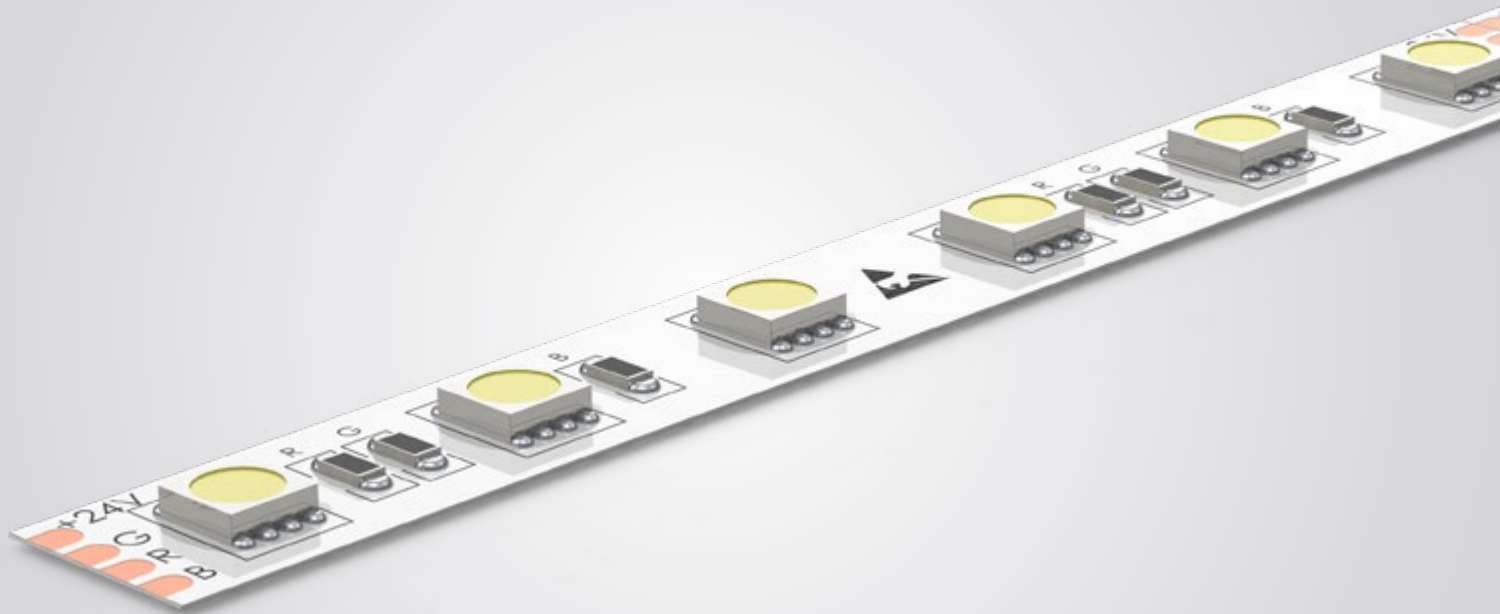
### LED TECHNOLOGY

#### RGBW (TUNEABLE WHITE) LED

Utilising brand new technology this RGBW chip is most powerful yet.







AVAILABLE COLOUR MIX



# FLEXIBLE RGB LED TAPE 14.4W/M

## CV LED FLEXIBLE STRIP

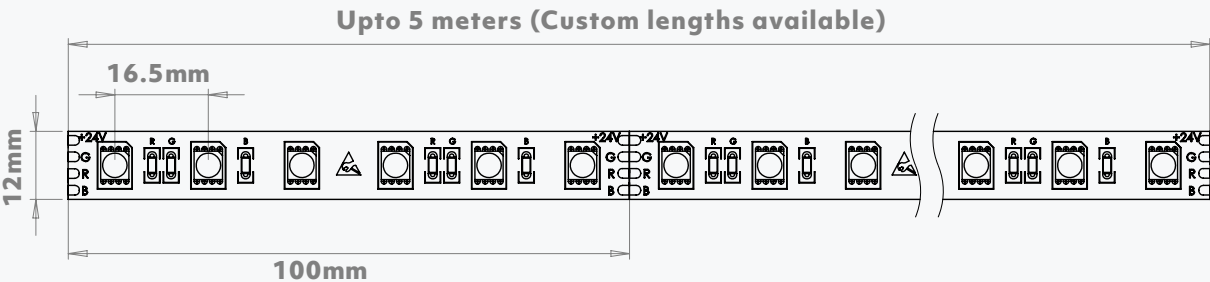
Designed for ease of install, our led tape is highly flexible and will fit in the most tightest and toughest of applications.

This flexible RGB LED Tape has 60 LED's per meter giving this LED Tape high brightness colour changing..

### TECHNICAL SPECIFICATIONS

- Voltage **24V**
- LED's Per Meter **60**
- LED Type **SMD5050**
- Power Consumption **14.4W/M**
- Channels **3Ch (RGB)**
- IP Rating **IP20 (IP67 also available)**
- Cutting Points **100mm**
- Operating Temp Range **-20° to 50°C**

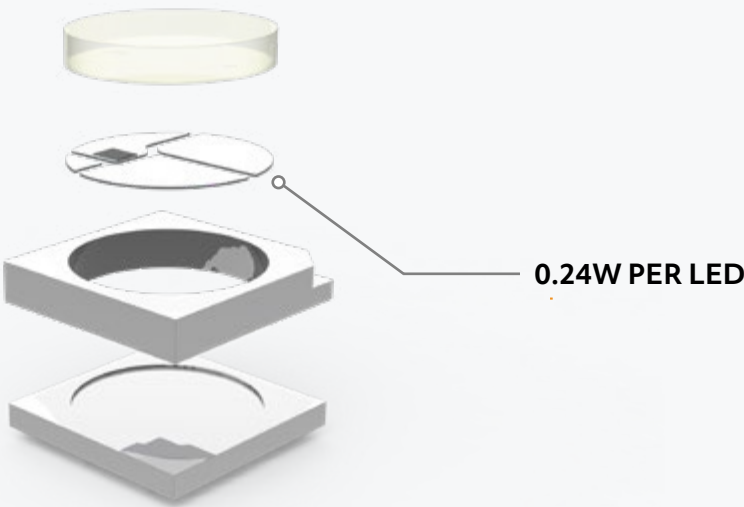
### DIMENSIONS



### LED TECHNOLOGY

#### EPISTAR DIODE

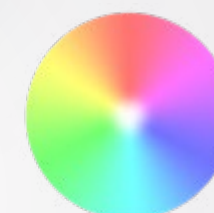
Utilising brand new technology this RGBW chip is most powerful yet. RGB with a tuneable white diode, achieve between 3000k - 6000k.





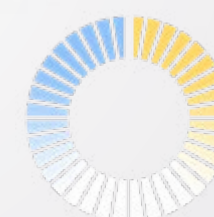
# CV LED DMX DRIVERS

Designed to work with 24v RGB and RGBW LED strip: Power up to 300% more linear meters per watt; experience super smooth 16bit dimming; control RGB colour & CCT from 2300-7000k; all from the most intelligent DMX driver range on the market.



## RGBW COLOUR

Colour like no other. With pioneering power balance technology, combined with all new 16bit technology and tuneable white control, our new driver is capable of producing an incomprehensible and unrivalled range of colours.



## TUNEABLE WHITE

Begin with RGBW-3000k LED and adjust colour temperature from 2300-7000k directly from the driver. This can be set as your desired White in 4 channel mode, or set driver to 5ch mode for R,G,B, Tuneable White control via DMX



## SMOOTH DIMMING

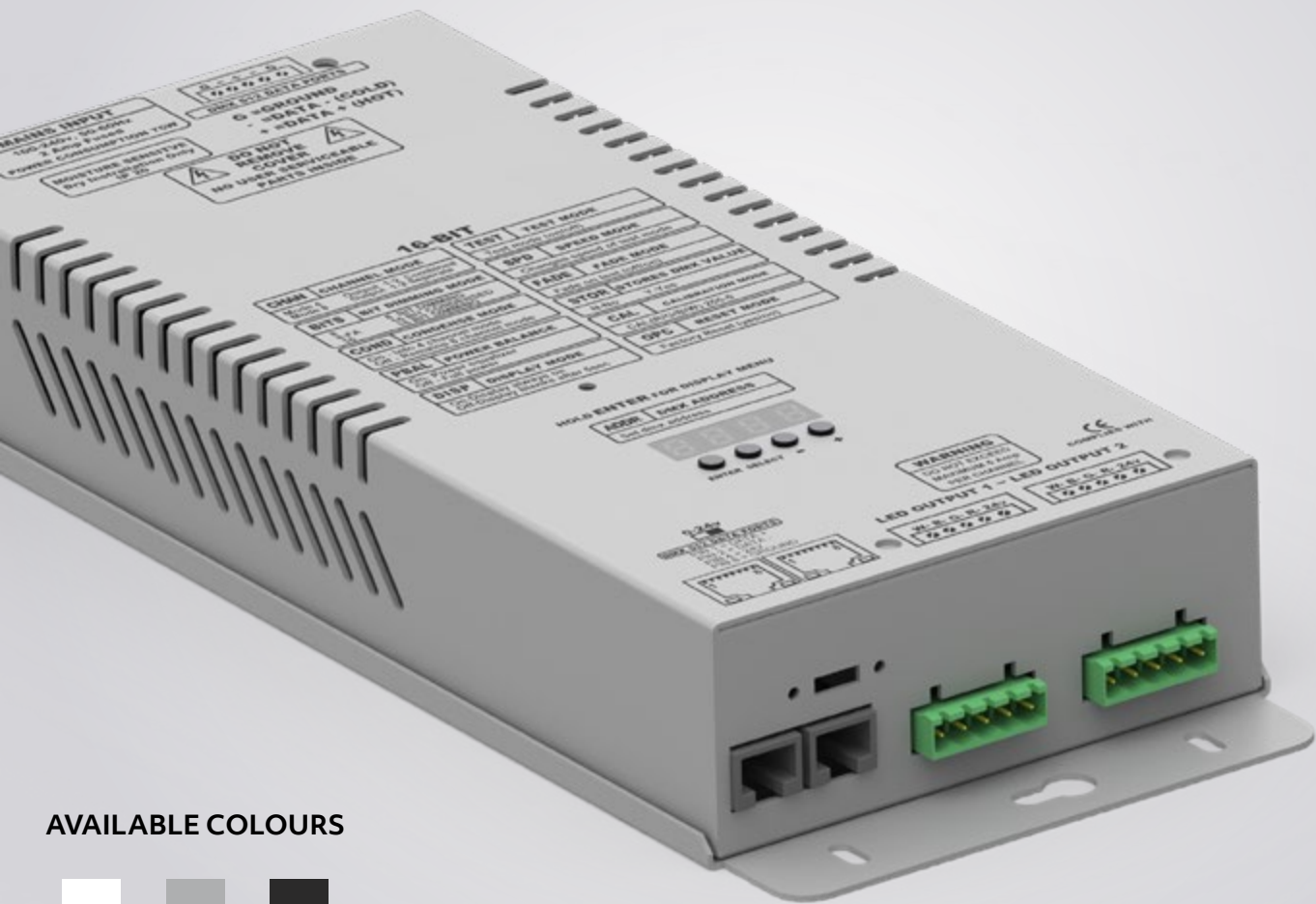
Experience super smooth dimming with 65,000 dimming steps from 0-100% in 16bit mode, or simulate the same dimming performance in 8bit fade mode without the need for a 16bit controller. (Standard 8bit mode available too)



## POWER BALANCE MODE

Our unique power balancing technology ensures that all colours are driven equally for even output across primary, secondary and tertiary colours. Resulting in lower energy consumption, with up to 300% more linear meters driven per watt, and increased longevity.





AVAILABLE COLOURS

WHITE GREY BLACK

# 75W 24V DMX DRIVE

## CV LED DMX DRIVER

**Designed to work with 60 LED per meter RGB/W SMD5050 LED**

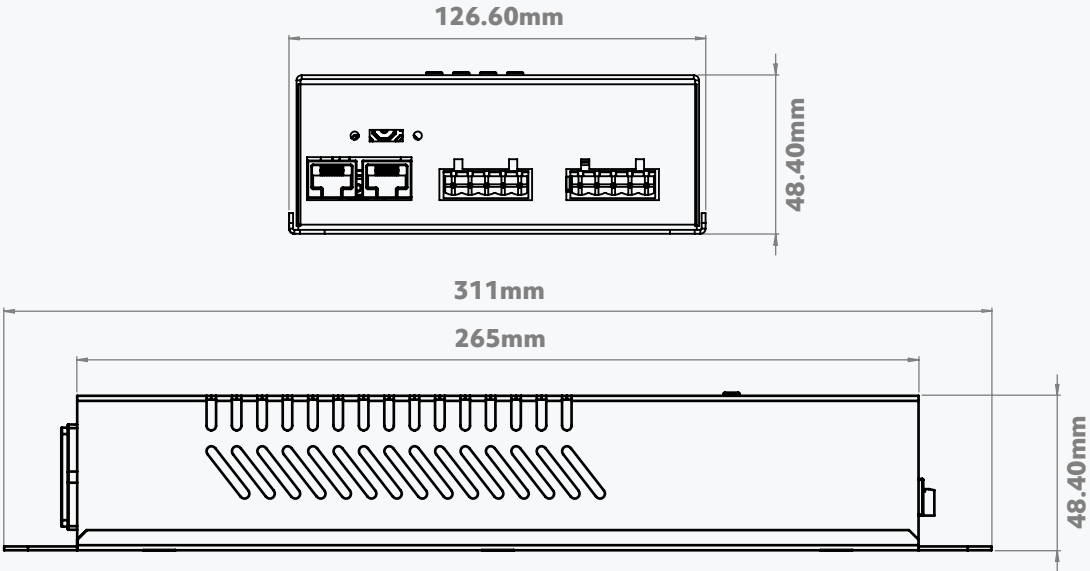
Ideal for home cinema rooms, kitchens, bars. This driver is perfect for taking care of those small projects where up to 15 meters of colour change LED strip needs powering.

With super smooth 16bit dimming and unrivalled RGB + tuneable white control, welcome to the most advanced DMX driver technology on the market.

### TECHNICAL SPECIFICATIONS

- Voltage **24V**
- LED Outputs **2**
- Output Current **5A Per Channel**
- Power Consumption **75W**
- Channels **1-8Ch (RGB[W]x2)**
- Power Input Mains **110-240VAC**
- Data Connections **3 Pin XLR / RJ45**
- LED Connection **5 Pin Pheonix Connector**
- Operating Temp Range **-20° to 50°C**

### DIMENSIONS



### CONNECTIONS

**3 Pin XLR**

Connect in/out for continuous data if more drivers are required.

**CAT5 RJ45**

**Alternative DMX**  
Connect in/out for continuous data if more drivers are required.

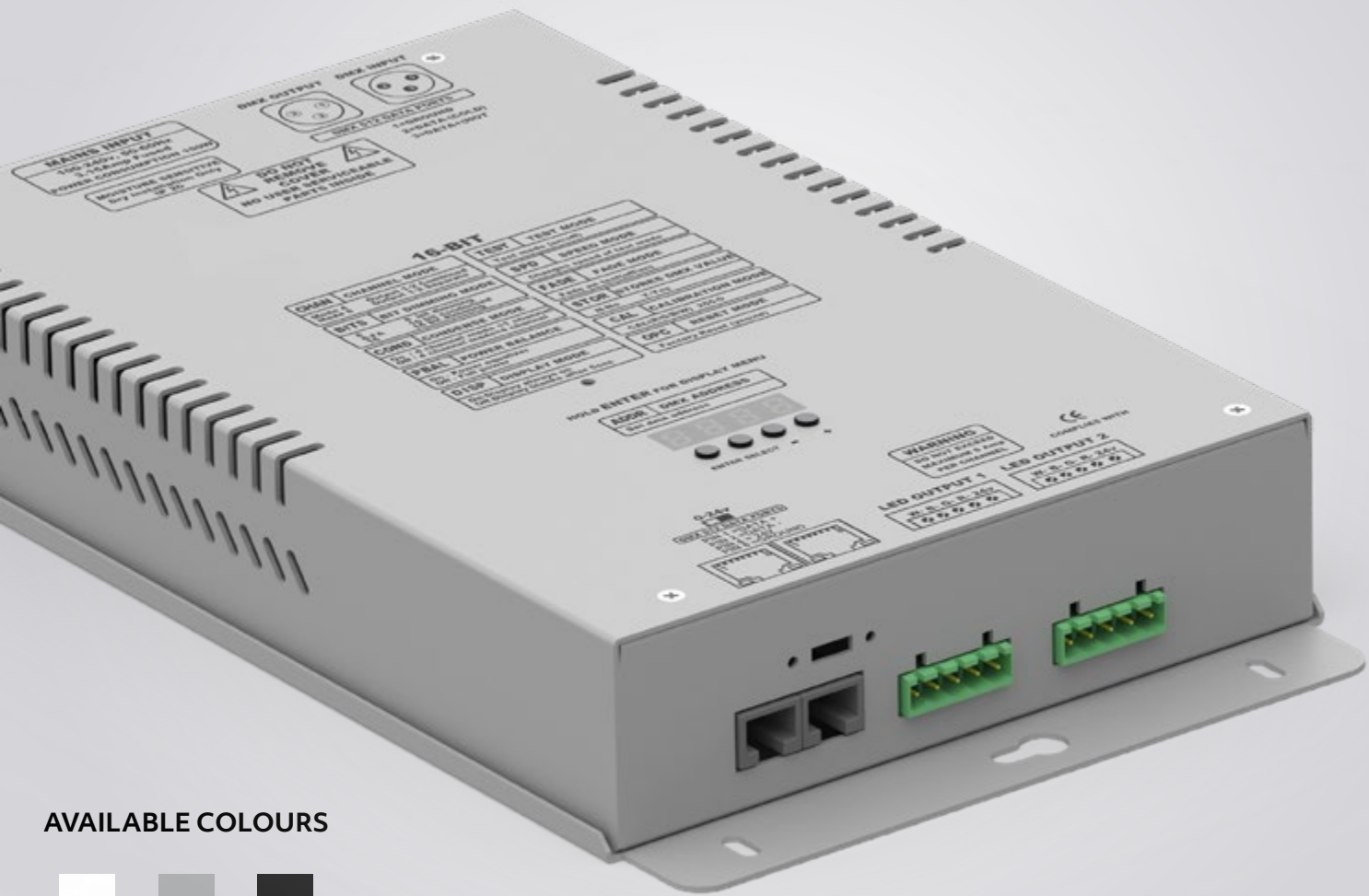
**Mains IEC**

110-240VAC

**5 Pin Pheonix Connector**

Connect to LED Tape, upto 7.5 Meters per output. (15M Total)

PIN 1 = WHITE  
PIN 2 = BLUE  
PIN 3 = GREEN  
PIN 4 = RED  
PIN 5 = 24V +



AVAILABLE COLOURS

WHITE GREY BLACK

# 150W 24V DMX DRIVE

## CV LED DMX DRIVER

Designed to work with 60 LED per meter RGB/W SMD5050 LED

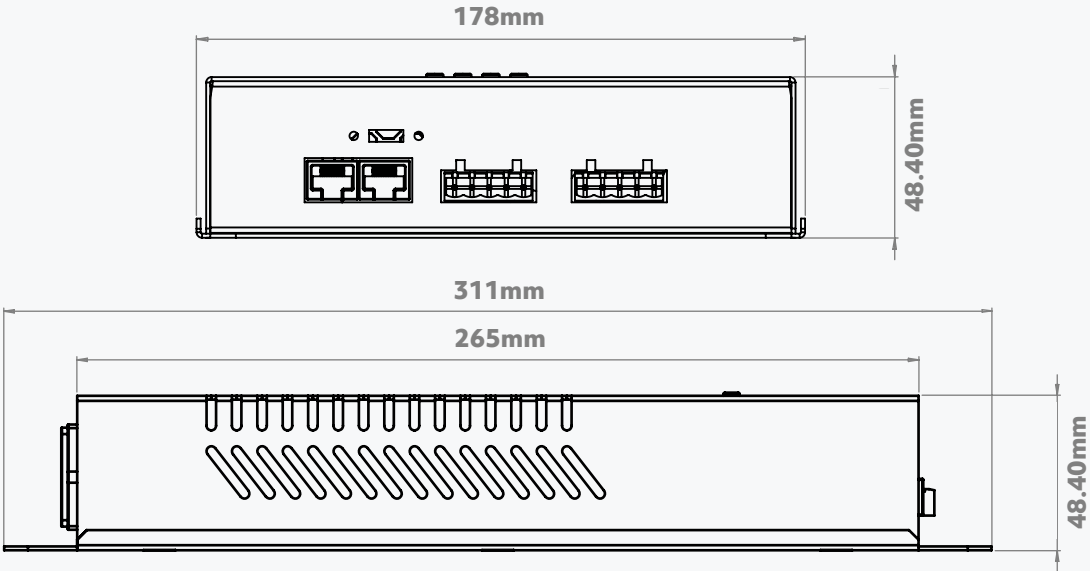
With twice the power of its predecessor, start to take on multiple rooms of colour change LED strip from a single driver unit, driving up to 30 meters across up to two controllable zones.

Experience lighting at its best with super smooth 16bit dimming and RGB + tuneable white control, from the most advanced DMX driver technology on the market.

### TECHNICAL SPECIFICATIONS

- Voltage **24V**
- LED Outputs **2**
- Output Current **5A**
- Power Consumption **150W**
- Channels **1-8Ch (RGB[W]x2)**
- Power Input Mains **110-240VAC**
- Data Connections **3 Pin XLR / RJ45**
- LED Connection **5 Pin Pheonix Connector**
- Operating Temp Range **-20° to 50°C**

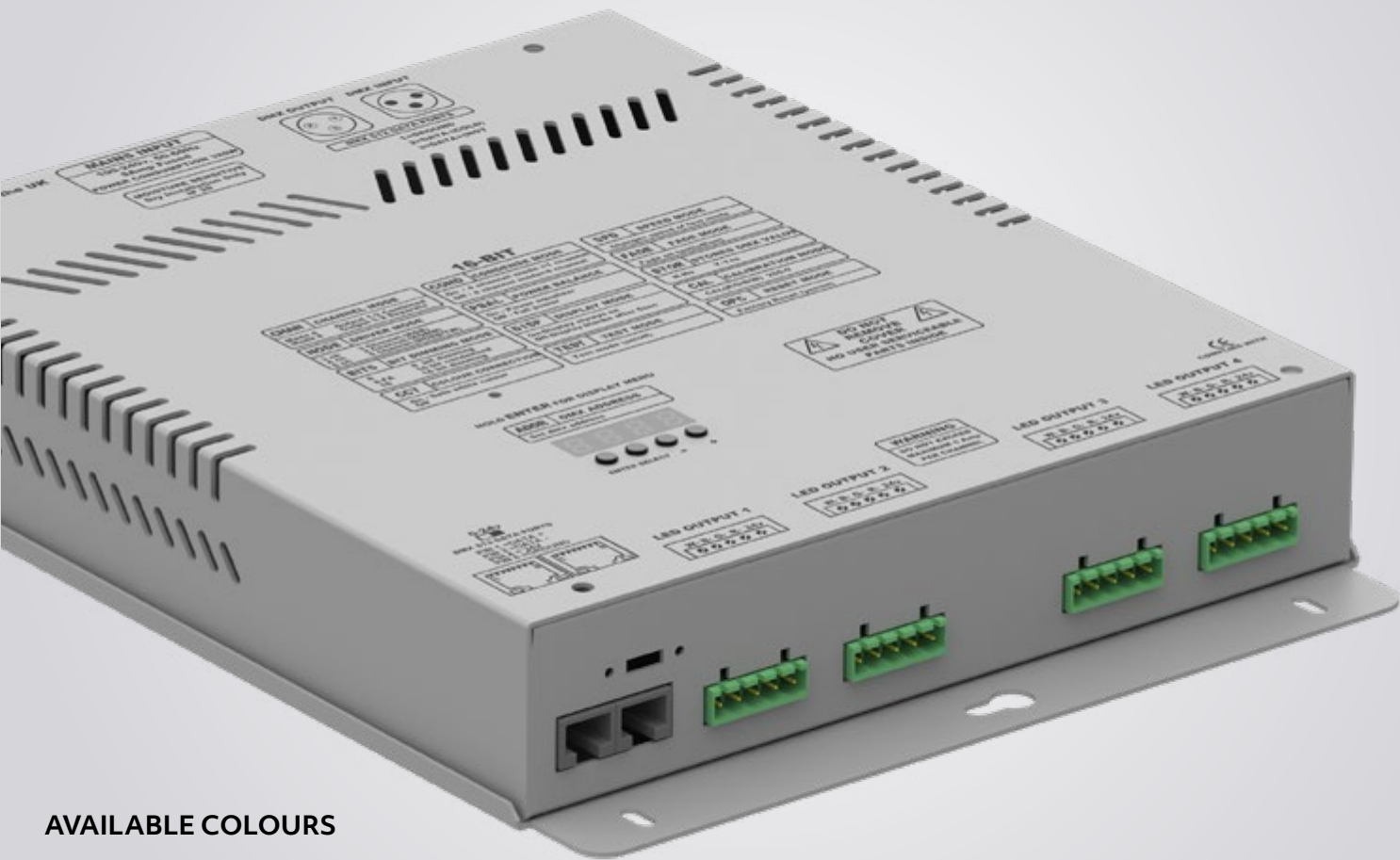
### DIMENSIONS



### CONNECTIONS

- 3 Pin XLR**  
Connect in/out for continuous data if more drivers are required.
- CAT5 RJ45**  
**Alternative DMX**  
Connect in/out for continuous data if more drivers are required.
- Mains IEC**  
110-240VAC
- 5 Pin Pheonix Connector**  
Connect to LED Tape, upto 15 Meters per output. (30M Total)  
  
PIN 1 = WHITE  
PIN 2 = BLUE  
PIN 3 = GREEN  
PIN 4 = RED  
PIN 5 = 24V +





AVAILABLE COLOURS

WHITE GREY BLACK

# 320W 24V DMX DRIVE

## CV LED DMX DRIVER

Designed to work with 60 LED per meter RGB/W SMD5050 LED

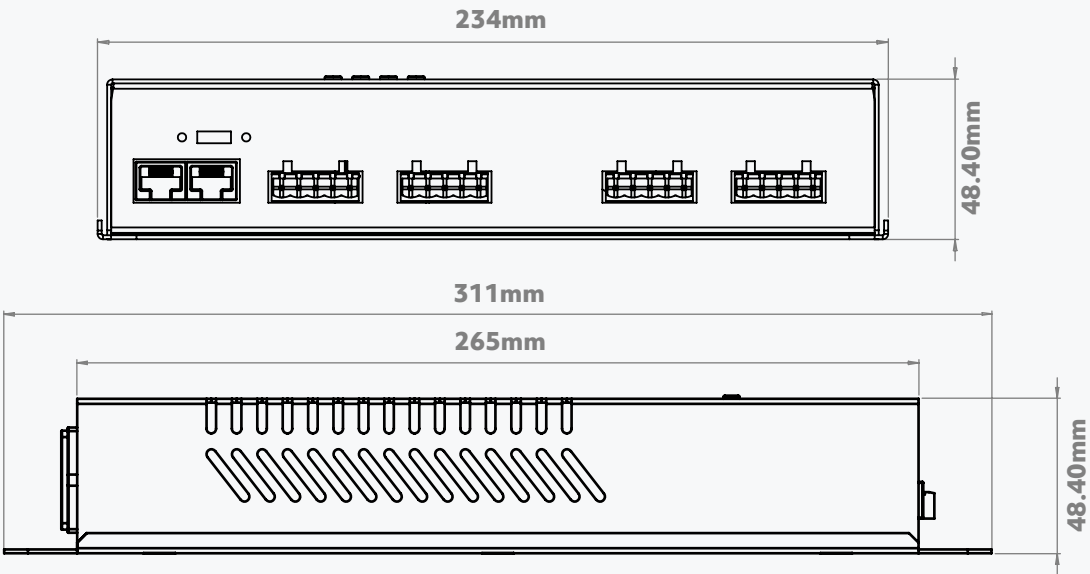
Make medium sized installations simple. With up to four zones of control and up to 60M of colour change LED strip all powered from one intelligent box.

A premium quality product, with super smooth 16bit dimming and unrivalled RGB + tuneable white control, this is the most advanced DMX driver technology on the market.

### TECHNICAL SPECIFICATIONS

- Voltage **24V**
- LED Outputs **4**
- Output Current **5A**
- Power Consumption **320W**
- Channels **1-16Ch (RGB[W]x4)**
- Power Input Mains **110-240VAC**
- Data Connections **3 Pin XLR / RJ45**
- LED Connection **5 Pin Pheonix Connector**
- Operating Temp Range **-20° to 50°C**

### DIMENSIONS



### CONNECTIONS

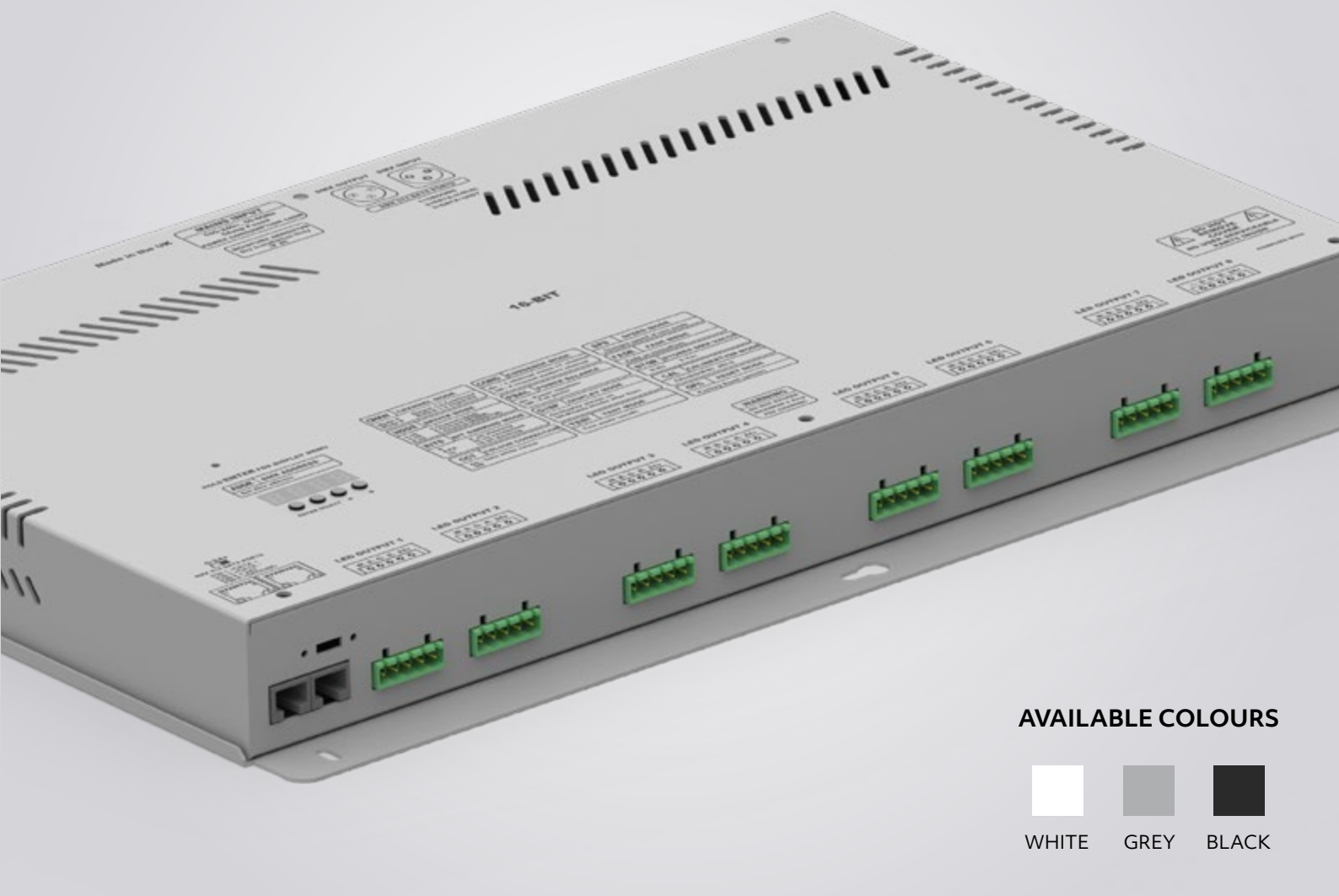
**3 Pin XLR**  
Connect in/out for continuous data if more drivers are required.

**CAT5 RJ45**  
**Alternative DMX**  
Connect in/out for continuous data if more drivers are required.

**Mains IEC**  
110-240VAC

**5 Pin Pheonix Connector**  
Connect to LED Tape, upto 15 Meters per output. (60M Total)

- PIN 1 = WHITE
- PIN 2 = BLUE
- PIN 3 = GREEN
- PIN 4 = RED
- PIN 5 = 24V +



# 640W 24V DMX DRIVE

## CV LED DMX DRIVER

Designed to work with 60 LED per meter RGB/W SMD5050 LED

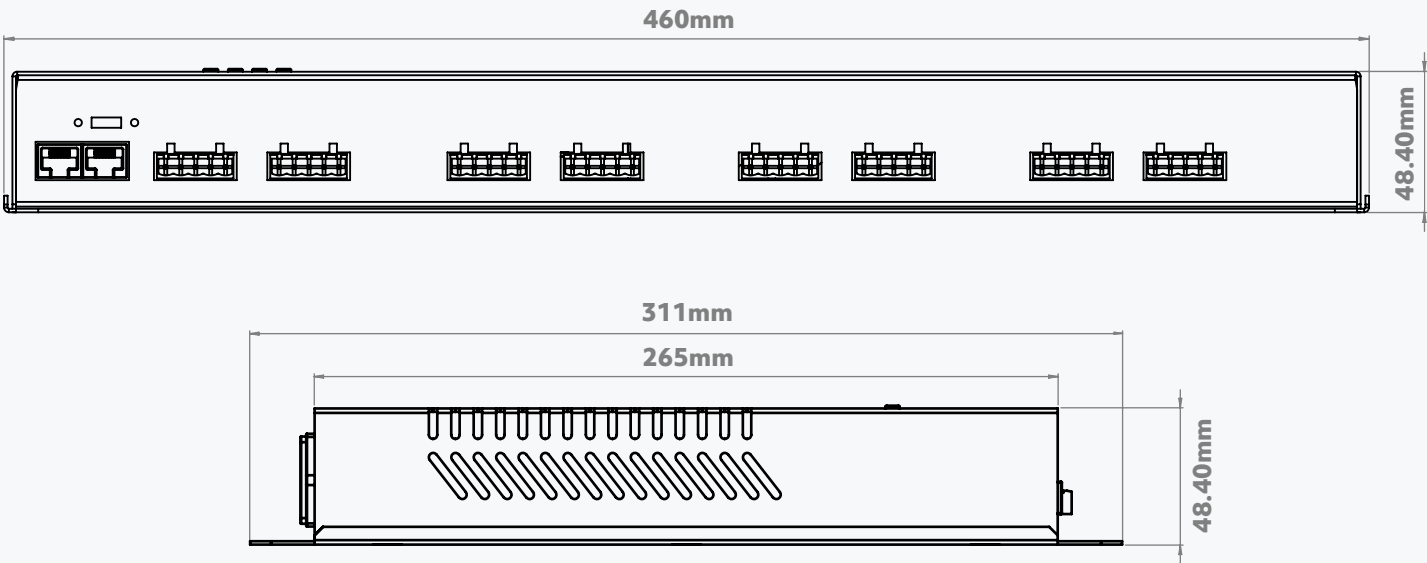
For those larger installations, power upto eight zones of control and up to 120M of colour change LED strip all taken care of from one powerhouse of quality driving technology.

A premium product with super smooth 16bit dimming and unrivalled RGB + tuneable white control, ready to make light work of big projects.


### TECHNICAL SPECIFICATIONS

- Voltage **24V**
- LED Outputs **8**
- Output Current **5A**
- Power Consumption **640W**
- Channels **1-32Ch (RGB[W]x8)**
- Power Input Mains **110-240VAC**
- Data Connections **3 Pin XLR / RJ45**
- LED Connection **5 Pin Pheonix Connector**
- Operating Temp Range **-20° to 50°C**


### DIMENSIONS




### CONNECTIONS



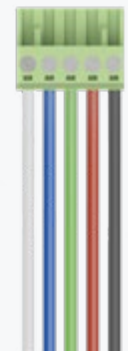
**3 Pin XLR**  
Connect in/out for continuous data if more drivers are required.



**CAT5 RJ45**  
**Alternative DMX**  
Connect in/out for continuous data if more drivers are required.

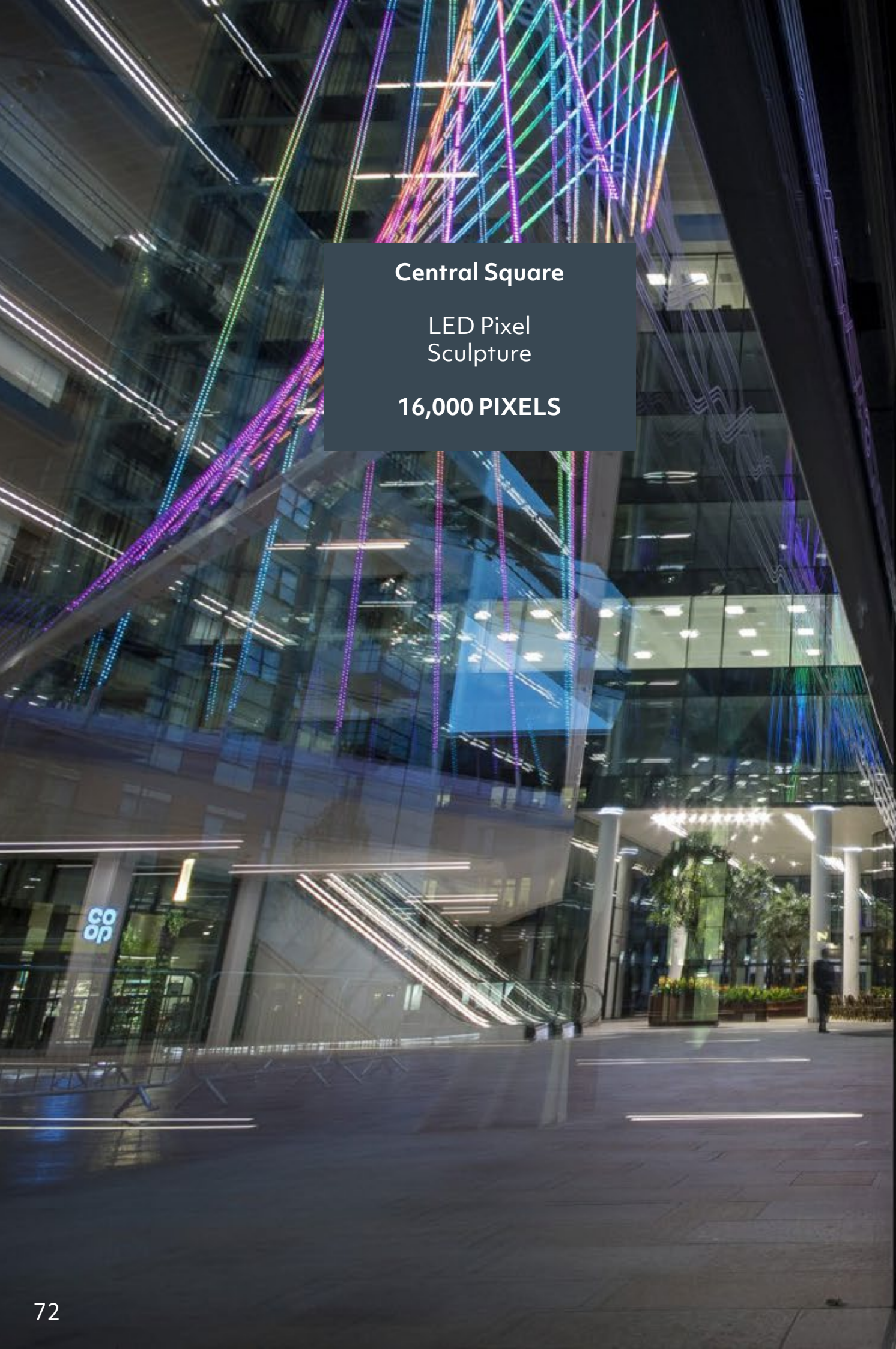


**Mains IEC**  
110-240VAC



**5 Pin Pheonix Connector**  
Connect to LED Tape, upto 15 Meters per output. (120M Total)  
  
PIN 1 = WHITE  
PIN 2 = BLUE  
PIN 3 = GREEN  
PIN 4 = RED  
PIN 5 = 24V +





Central Square

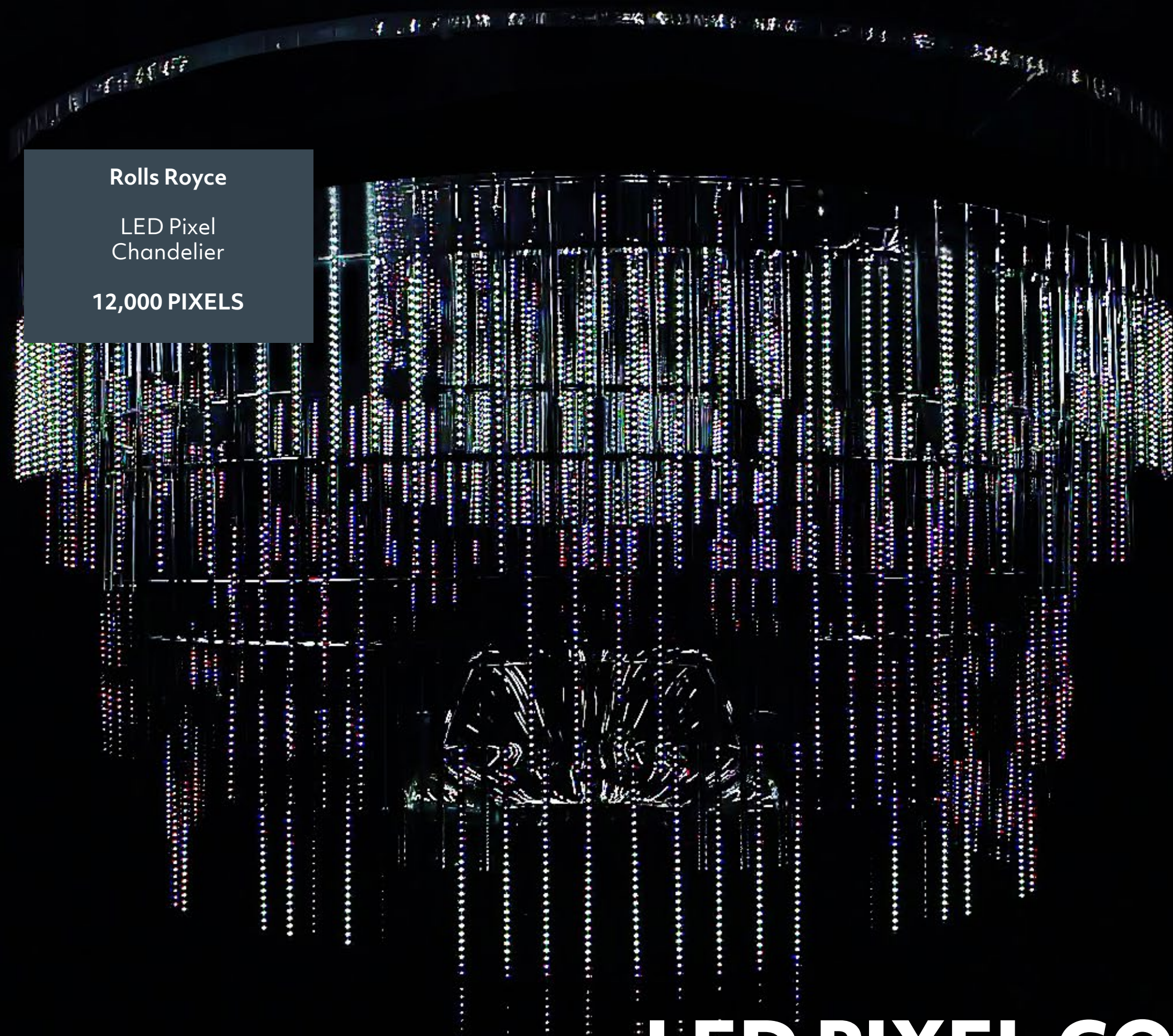
LED Pixel  
Sculpture

16,000 PIXELS



**LED PIXEL CONTROL**





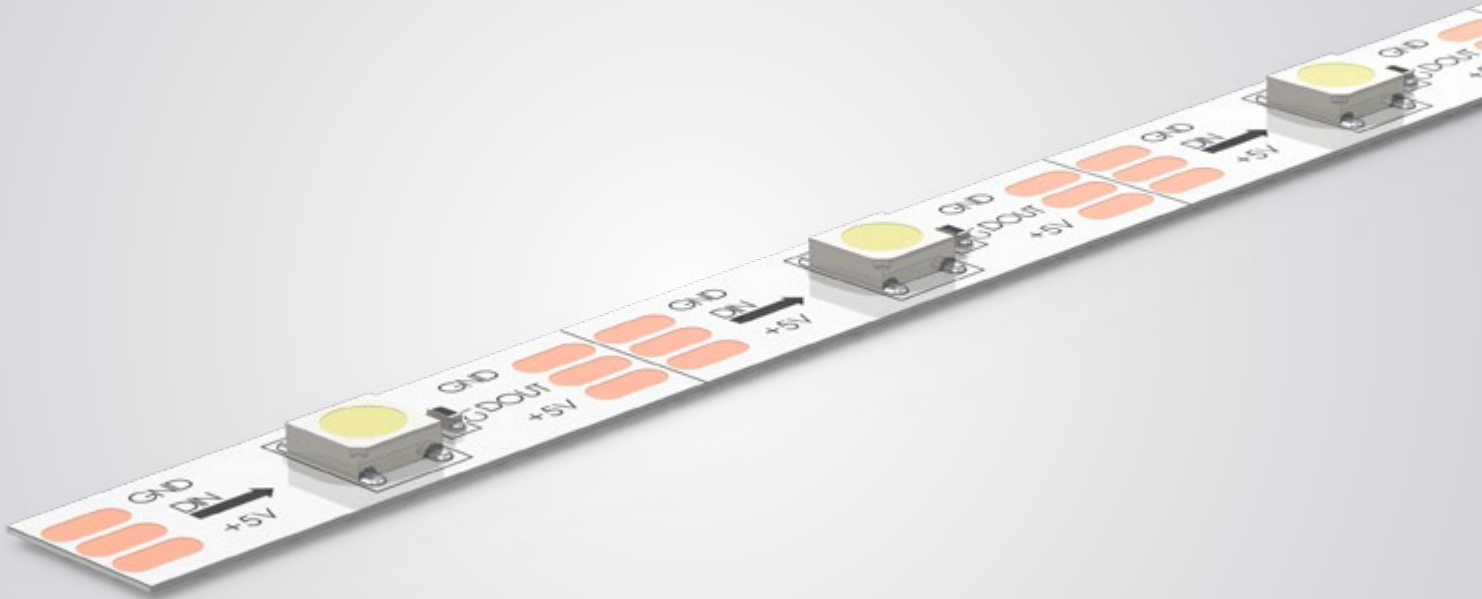
**Rolls Royce**

LED Pixel  
Chandelier

**12,000 PIXELS**

**LED PIXEL CONTROL**





AVAILABLE COLOUR MIX



# FLEXIBLE PIXEL RGB TAPE 30 LED 5V

## PIXEL LED FLEXIBLE STRIP

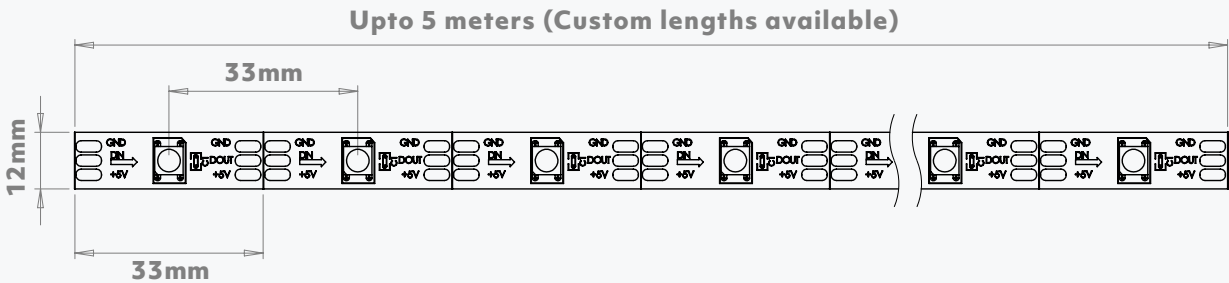
Designed for ease of install, our led tape is highly flexible and will fit in the most tightest and toughest of applications.

This flexible RGB LED Tape has 30 LED's per meter giving this LED Tape high definition colour flows at a high brightness.

### TECHNICAL SPECIFICATIONS

- Voltage **5V**
- LED's Per Meter **30**
- LED Type **SMD5050**
- Power Consumption **7.2W/M**
- Channels **3Ch Per Pixel [RGB]**
- IP Rating **IP20 (IP67 also available)**
- Cutting Points **33mm**
- Controllable Pixels **1 LED = 1 Pixel**
- Operating Temp Range **-20° to 50°C**

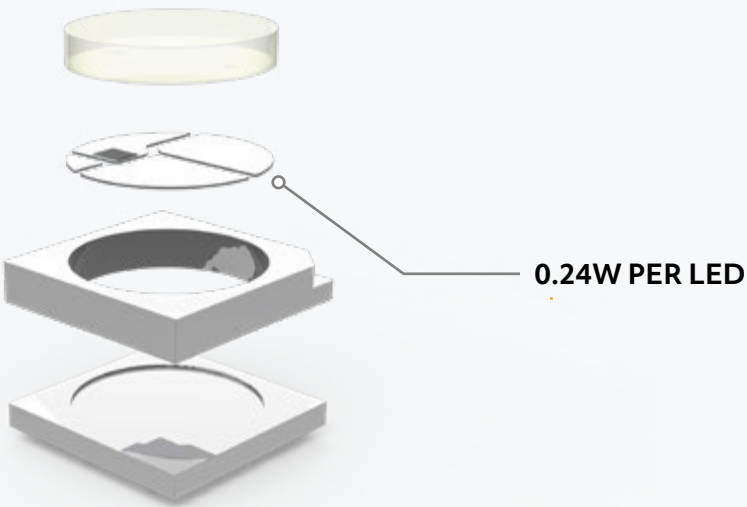
### DIMENSIONS

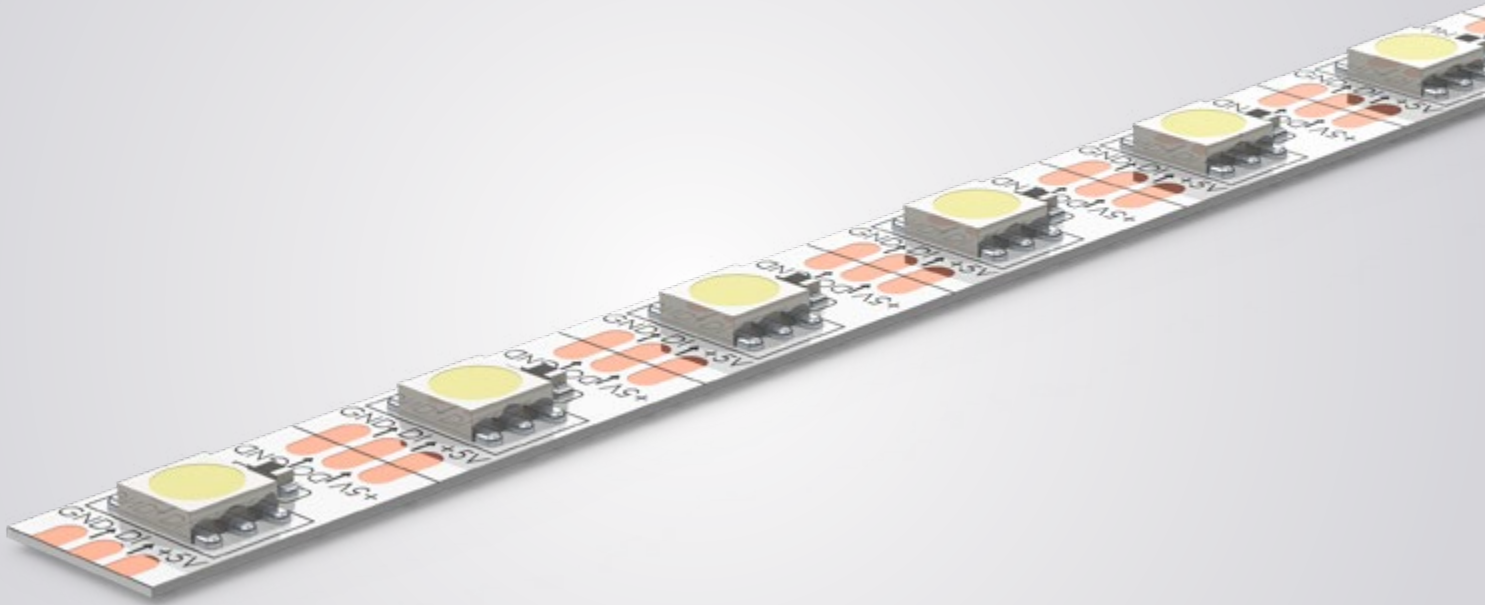


### LED TECHNOLOGY

#### RGB LED SMD5050

With onboard IC processor for individual addressing and premium quality colour rendering,.





AVAILABLE COLOUR MIX



# FLEXIBLE PIXEL RGB TAPE 60 LED 5V

## PIXEL LED FLEXIBLE STRIP

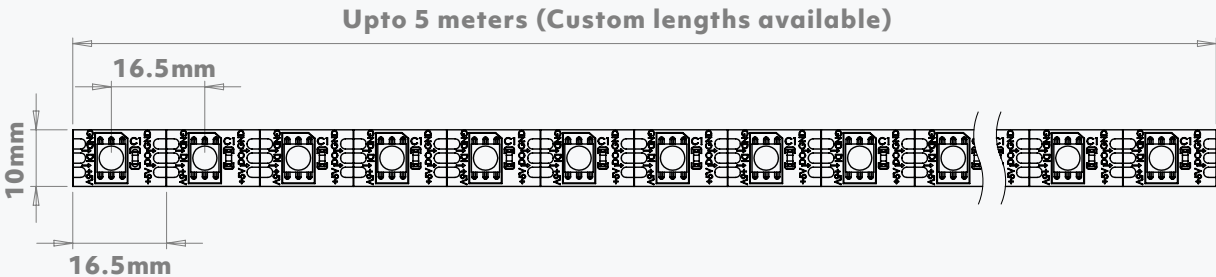
Designed for ease of install, our led tape is highly flexible and will fit in the most tightest and toughest of applications.

This flexible RGB LED Tape has 60 LED's per meter giving this LED Tape high definition colour flows at a high brightness.

### TECHNICAL SPECIFICATIONS

- Voltage **5V**
- LED's Per Meter **60**
- LED Type **SMD5050**
- Power Consumption **14.4W/M**
- Channels **3Ch Per Pixel [RGB]**
- IP Rating **IP20 (IP67 also available)**
- Cutting Points **16.5mm**
- Controllable Pixels **1 LED = 1 Pixel**
- Operating Temp Range **-20° to 50°C**

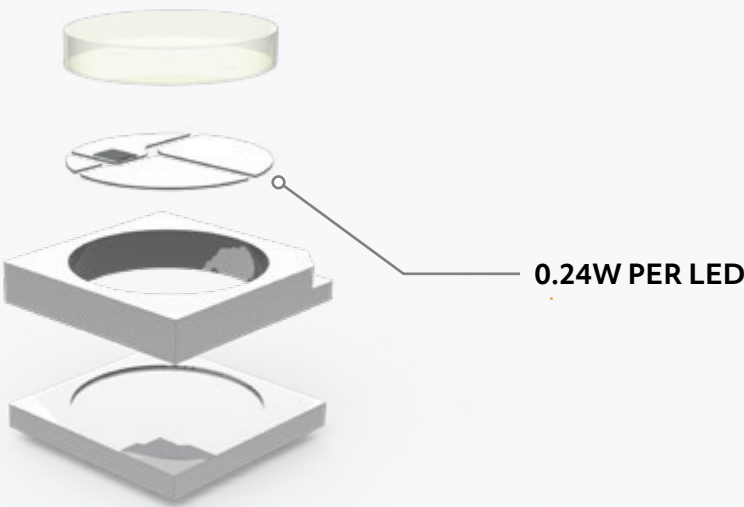
### DIMENSIONS



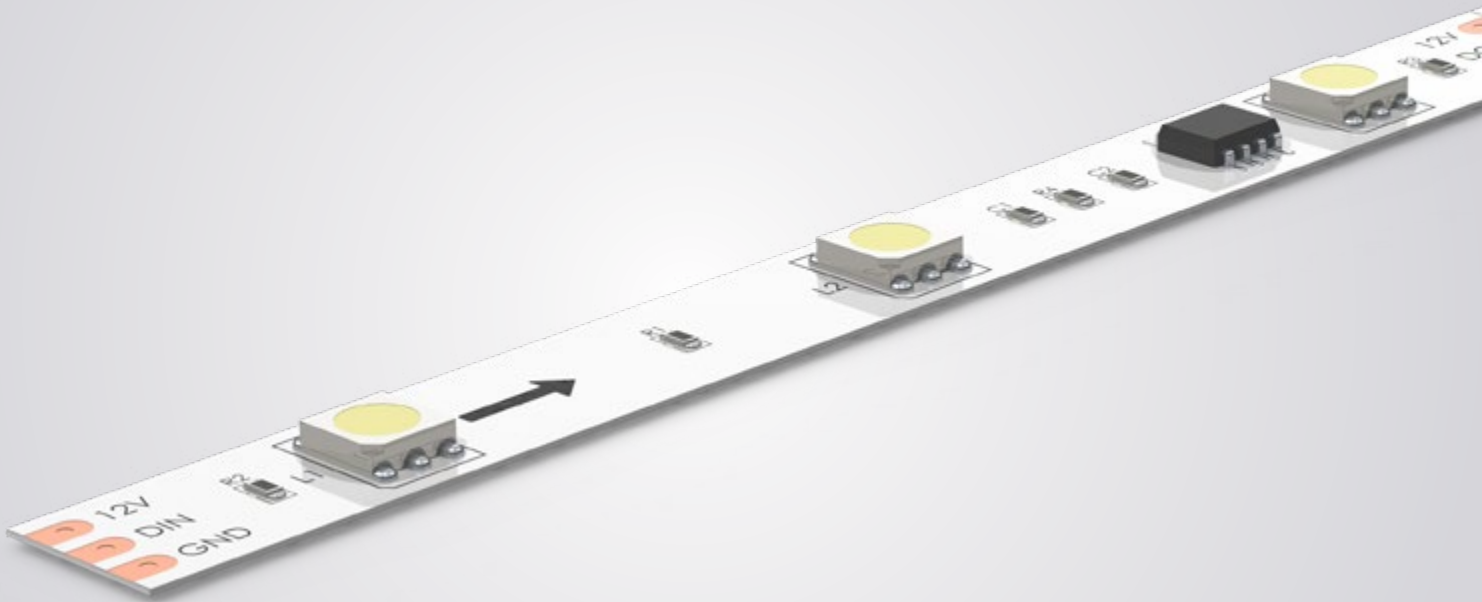
### LED TECHNOLOGY

#### RGB LED SMD5050

With onboard IC processor for individual addressing and premium quality colour rendering,.







AVAILABLE COLOUR MIX



# FLEXIBLE PIXEL RGB TAPE 30 LED 12V

## PIXEL LED FLEXIBLE STRIP

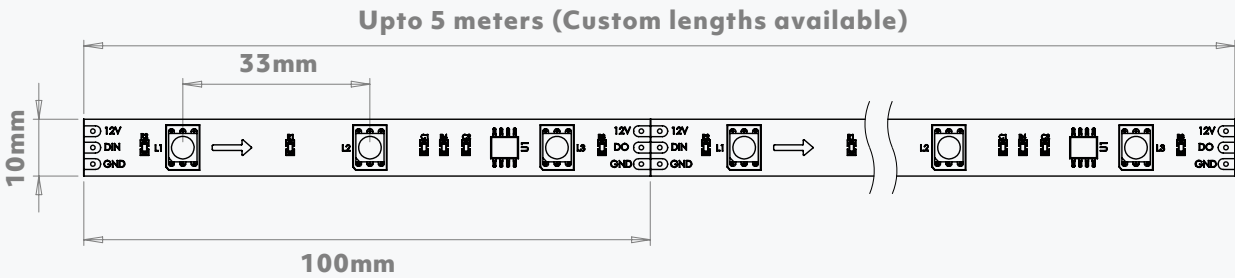
Designed for ease of install, our led tape is highly flexible and will fit in the most tightest and toughest of applications.

This flexible RGB LED Tape has 30 LED's per meter giving this LED Tape high definition colour flows at a high brightness.

### TECHNICAL SPECIFICATIONS

- Voltage **12V**
- LED's Per Meter **30**
- LED Type **SMD5050**
- Power Consumption **7.2W/M**
- Channels **3Ch Per Pixel [RGB]**
- IP Rating **IP20 (IP67 also available)**
- Cutting Points **100mm**
- Controllable Pixels **3 LED = 1 Pixel**
- Operating Temp Range **-20° to 50°C**

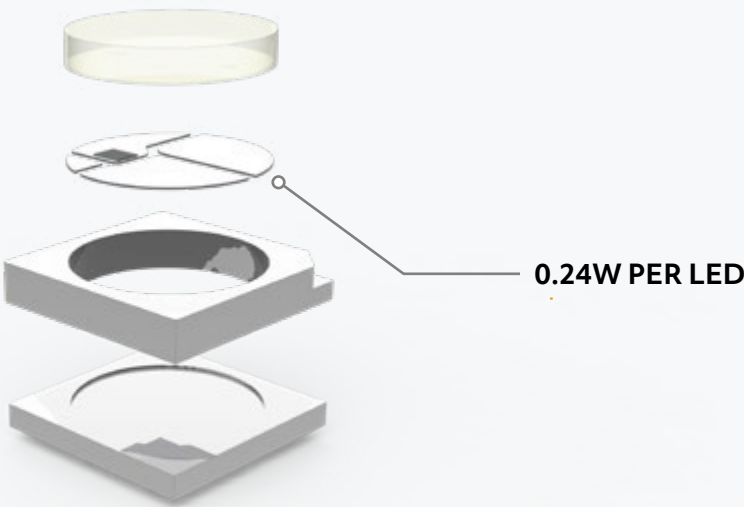
### DIMENSIONS

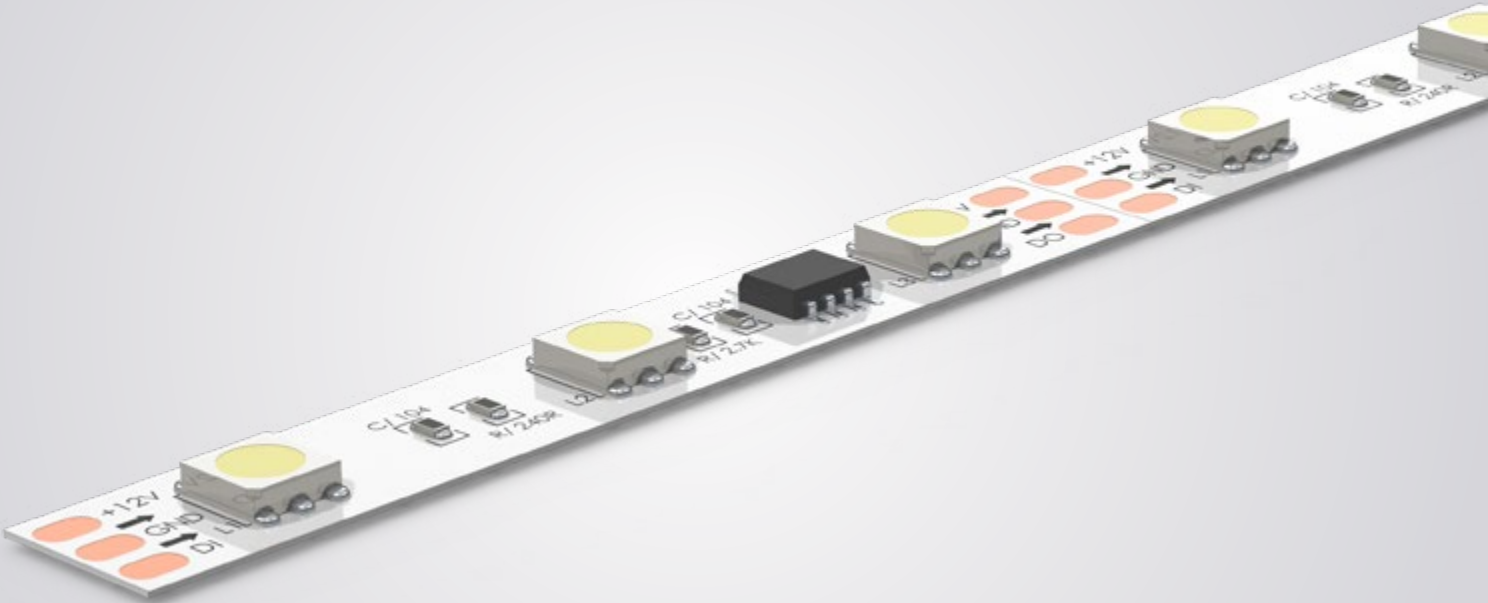


### LED TECHNOLOGY

#### RGB LED SMD5050

With onboard IC processor for individual addressing and premium quality colour rendering,.





AVAILABLE COLOUR MIX



# FLEXIBLE PIXEL RGB TAPE 48 LED 12V

## PIXEL LED FLEXIBLE STRIP

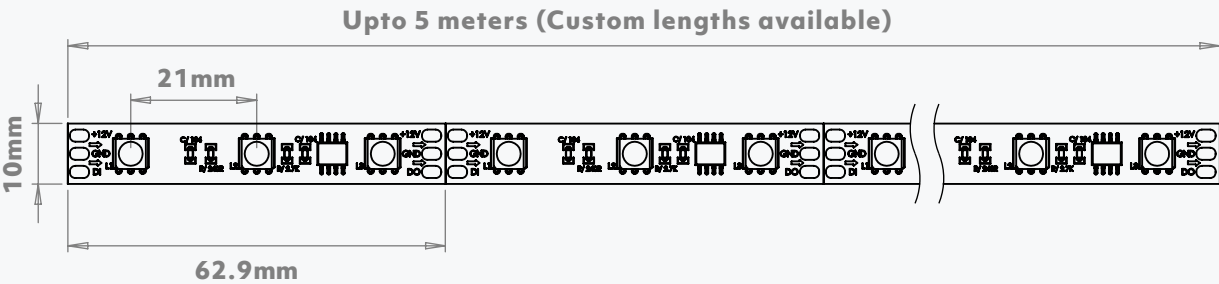
Designed for ease of install, our led tape is highly flexible and will fit in the most tightest and toughest of applications.

This flexible RGB LED Tape has 48 LED's per meter giving this LED Tape high definition colour flows at a high brightness.

### TECHNICAL SPECIFICATIONS

- Voltage **12V**
- LED's Per Meter **48**
- LED Type **SMD5050**
- Power Consumption **11.6W/M**
- Channels **3Ch Per Pixel [RGB]**
- IP Rating **IP20 (IP67 also available)**
- Cutting Points **63mm**
- Controllable Pixels **3 LED = 1 Pixel**
- Operating Temp Range **-20° to 50°C**

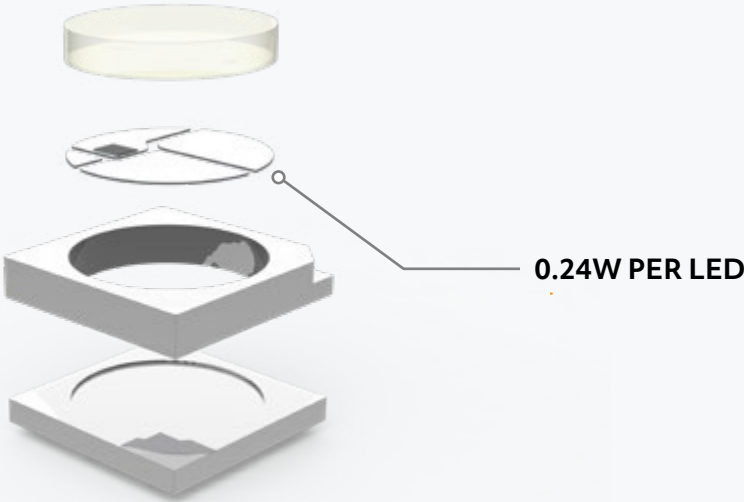
### DIMENSIONS



### LED TECHNOLOGY

#### RGB LED SMD5050

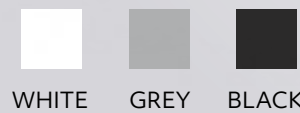
With onboard IC processor for individual addressing and premium quality colour rendering,.







AVAILABLE COLOURS



# 75W PIXEL DMX DRIVE

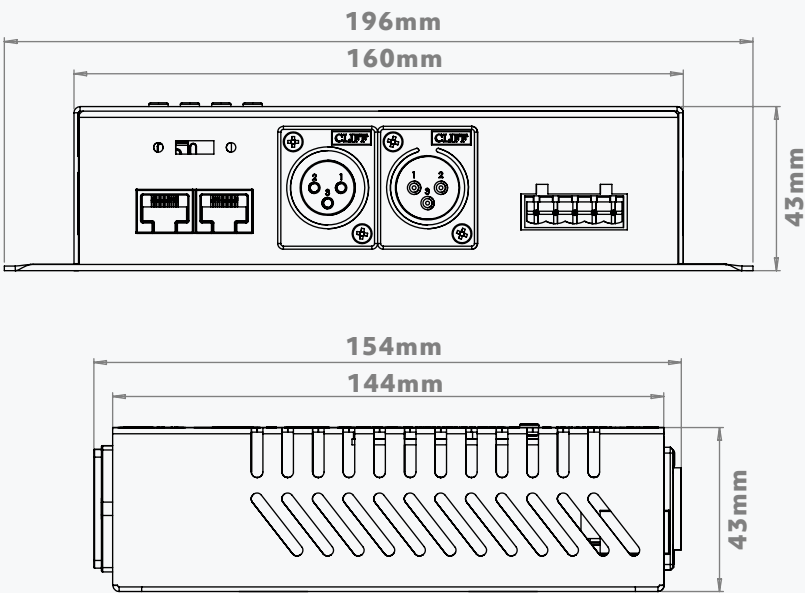
## PIXEL LED DMX DRIVE

Incredible pixel output with just mains and DMX input, this compact driver makes pixel technology simple. Control up to 170 RGB or 128 RGBW individual pixels, or save your DMX channels by grouping pixels directly from the driver's on board display.

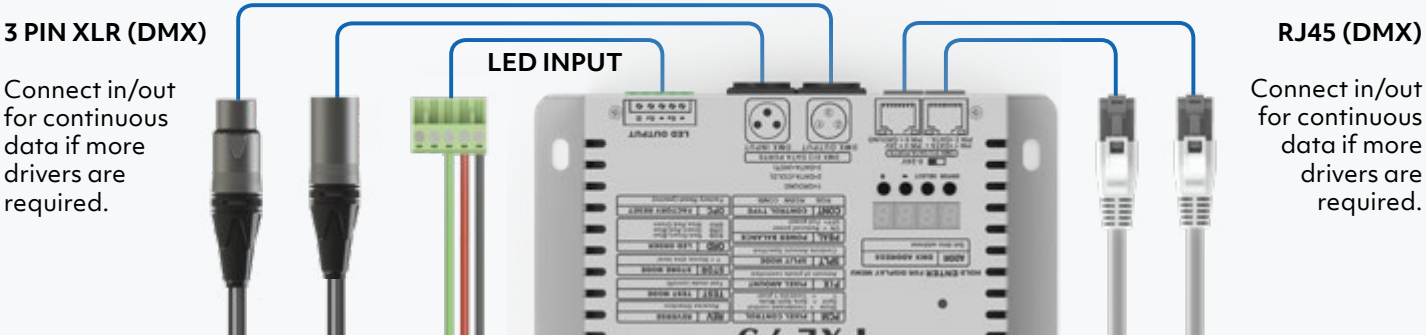
### TECHNICAL SPECIFICATIONS

- Voltage **5V**
- LED Outputs **1**
- Output Current **5A**
- Power Consumption **75W**
- Tape Capability **Run Upto 150 Pixels**
- Power Input Mains **110-240VAC**
- Data Connections **3 Pin XLR / RJ45**
- LED Connection **5 Pin Phoenix Connector**
- Operating Temp Range **-20° to 50°C**

### DIMENSIONS

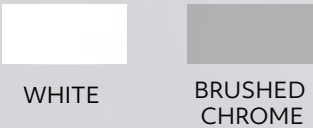


### CONNECTIONS





AVAILABLE COLOURS



# 4CH RGBW DMX CONTROLLER

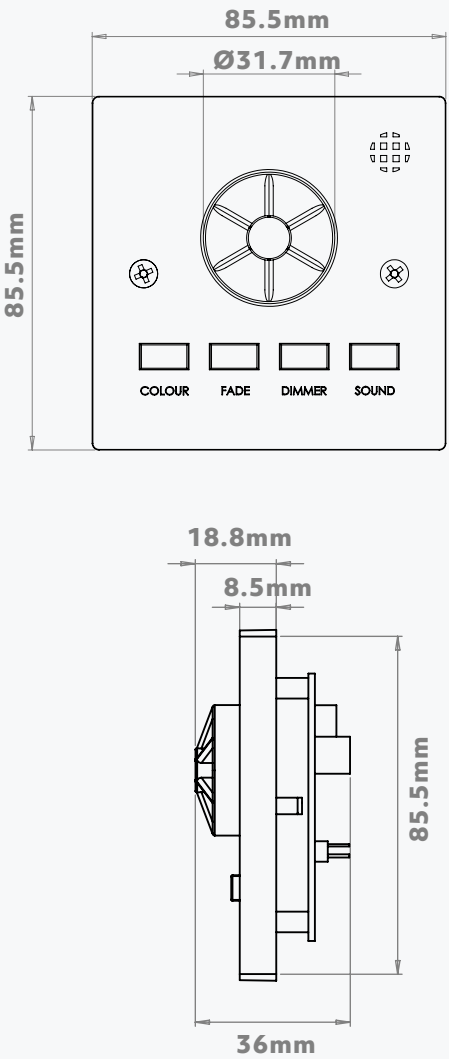
## LED DMX CONTROLLER

With the ability to select a static colour, select & control speed of colour fade, control brightness, the 4ch controller is the most user friendly way of taking control of a single zone of RGBW LED.

### TECHNICAL SPECIFICATIONS

- Voltage **12V-48V**
- DMX Channels **64**
- Material **Polycarbonate / Stainless Steel**
- Controller Buttons **4 Mode , 1 Scroll (ON/OFF)**
- Capability **CC/CV Drivers / Any DMX Unit**
- Power Input **DC Power Via Drivers / 12-48V PSU**
- Mounting **Single Pattress Box**
- Controller Connection **4 Pin Phoenix Connector**

### DIMENSIONS





# ACCESSORIES





**3 PIN - 3 PIN XLR**

Available Lengths:  
0.5m, 1m, 2m, 3m



**3 PIN FEMALE - 5 PIN MALE XLR**

Available Lengths:  
0.5m, 1m, 2m, 3m



**4 PIN - 4 PIN XLR**

Available Lengths:  
0.5m, 1m, 2m, 3m



**CAT5 - CAT5**

Available Lengths:  
0.5m, 1m, 2m, 3m



**5 PIN - 5 PIN XLR**

Available Lengths:  
0.5m, 1m, 2m, 3m



**MAINS CABLE 240V**

Available Lengths:  
0.5m, 1m, 2m, 3m



**3 PIN MALE - 5 PIN FEMALE XLR**

Available Lengths:  
0.5m, 1m, 2m, 3m



**MAINS POWERCON**

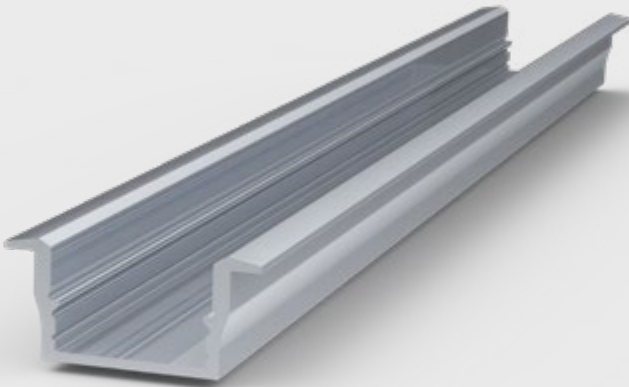
Available Lengths:  
0.5m, 1m, 2m, 3m





THIN SURFACE

Available Lengths:  
1m, 2m



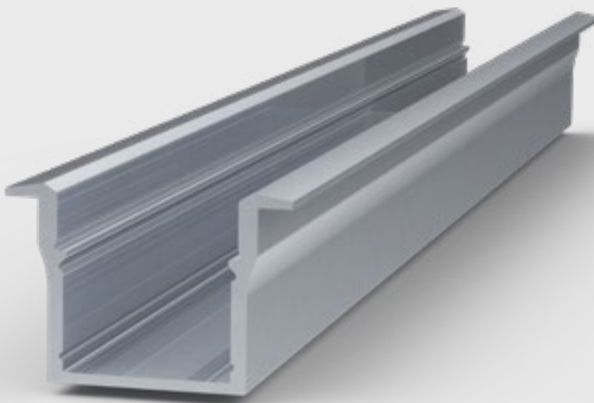
THIN RECESSED

Available Lengths:  
1m, 2m



DEEP SURFACE

Available Lengths:  
1m, 2m



DEEP RECESSED

Available Lengths:  
1m, 2m



BENDABLE

Available Lengths:  
1m, 2m



CORNER

Available Lengths:  
1m, 2m

ACCESSORIES - CONNECTORS



T-PIECE CONNECTOR

TPC-LED



INLINE CONNECTOR

INLC-DA

ACCESSORIES - PRODUCT ADD-ONS



5W GIMBAL

Available Finishes:  
White, Chrome, Brushed Steel



20W GIMBAL

Available Finishes:  
White

ACCESSORIES - PROGRAMMING



SHOWMAGIC SOFTWARE

Available Software Versions

- SL
- SL PLUS
- SLX
- SLX PLUS
- AV
- AV PLUS



ENTTEC DMX USB PRO

Connect your computer to  
DMX512 lighting networks



3 PIN - 5 PIN XLR ADAPTER





# LIGHTING ARCHITECTURAL BROCHURE 2018